

MORGAN OFFSHORE WIND PROJECT: GENERATION ASSETS

Technical engagement plan

Planning Inspectorate Reference Number: EN010136

Document Number: MRCNS-J3303-RPS-10027

Document Reference: E4

APFP Regulations: 5(2)(q)

April 2024

F01



Image of an offshore wind farm

MORGAN OFFSHORE WIND PROJECT: GENERATION ASSETS

Document status

Version	Purpose of document	Authored by	Reviewed by	Approved by	Review date
F01	Application	RPS	Morgan Offshore Wind Ltd.	Morgan Offshore Wind Ltd.	April 2024

Prepared by:

RPS

Prepared for:

Morgan Offshore Wind Ltd.

MORGAN OFFSHORE WIND PROJECT: GENERATION ASSETS

Contents

1	TECHNICAL ENGAGEMENT PLAN	1
1.1	Introduction	1
1.1.1	Overview	1
1.1.2	Aims of the report	3
1.2	Evidence Plan Process	5
1.2.1	Overview	5
1.2.2	Evidence Plan Technical consultation.....	10
1.3	Engagement forums	35
1.3.1	Marine Navigation Engagement Forum	35
1.3.2	Archaeology and Heritage Engagement Forum.....	41
1.4	Other technical consultation	45
1.4.1	Commercial fisheries consultation	45
1.4.2	Shipping and navigation consultation.....	51
1.4.3	Aviation and radar consultation.....	54
1.4.4	Other sea users consultation	56
1.4.5	Seascape, landscape and visual resources consultation	57
1.4.6	Socio-economics consultation.....	59
1.5	References	60

Tables

Table 1.1:	Technical Engagement Plan appendix list.	4
Table 1.2:	Participants in the Evidence Plan Process.....	8
Table 1.3:	Participants in the EWGs.....	10
Table 1.4:	Steering group consultation held to date.....	11
Table 1.5:	Benthic ecology, fish and shellfish ecology, physical processes EWG consultation held to date	13
Table 1.6:	Issues agreed with the benthic ecology, fish and shellfish and physical processes EWG.	14
Table 1.7:	Issues still under discussion with the benthic ecology, fish and shellfish ecology and physical processes EWG.....	20
Table 1.8:	Marine Mammal EWG consultation held to date and anticipated to take place in the pre-application phase.....	23
Table 1.9:	Issues agreed with the marine mammal EWG.....	25
Table 1.10:	Issues still under discussion with the marine mammal EWG.....	28
Table 1.11:	Offshore ornithology EWG consultation held to date and anticipated to take place.	30
Table 1.12:	Issues agreed with the offshore ornithology EWG.	32
Table 1.13:	Issues under discussion with the offshore ornithology EWG.	34
Table 1.14:	Participants in the MNEF process ¹	37
Table 1.15:	MNEF consultation held to date and anticipated to take place in the pre-application phase.....	39
Table 1.16:	Issues agreed with the MNEF	40
Table 1.17:	Participants in the AHEF.	42
Table 1.18:	AHEF consultation held to date.	44
Table 1.19:	Commercial fisheries consultation held to date.....	45
Table 1.20:	Shipping and navigation consultation held to date.....	51
Table 1.21:	Aviation and radar consultation held to date.....	54
Table 1.22:	Other sea users consultation held to date.....	56
Table 1.23:	Seascape, landscape and visual consultation held to date.....	58
Table 1.24:	Socio-economics consultation held to date.....	59

Figures

Figure 1.1:	Morgan Offshore Wind Project Generation Assets – project overview	2
-------------	---	---

MORGAN OFFSHORE WIND PROJECT: GENERATION ASSETS

Appendices

APPENDIX A – EVIDENCE PLAN STEERING GROUP

APPENDIX B – EVIDENCE PLAN BENTHIC ECOLOGY, FISH AND SHELLFISH AND PHYSICAL PROCESSES
EWG

APPENDIX C – EVIDENCE PLAN MARINE MAMMALS EWG

APPENDIX D – EVIDENCE PLAN OFFSHORE ORNITHOLOGY EWG

APPENDIX E – MARINE NAVIGATION ENGAGEMENT FORUM

APPENDIX F – ARCHAEOLOGY AND HERITAGE ENGAGEMENT FORUM - OFFSHORE

APPENDIX G – COMMERCIAL FISHERIES

APPENDIX H – SHIPPING NAVIGATION

APPENDIX I – AVIATION AND RADAR

APPENDIX J – OTHER SEA USERS

APPENDIX K – SEASCAPE, LANDSCAPE AND VISUAL RESOURCES

APPENDIX L – SOCIO-ECONOMICS

MORGAN OFFSHORE WIND PROJECT: GENERATION ASSETS

Glossary

Term	Meaning
Applicant	Morgan Offshore Wind Limited.
Cable protection	Protective materials to avoid cable damage and degradation because of the flow of water.
Development Consent Order (DCO)	An order made under the Planning Act 2008 granting development consent for a Nationally Significant Infrastructure Project (NSIP).
Environmental Impact Assessment (EIA)	A statutory process by which certain planned projects must be assessed before a formal decision to proceed can be made. It involves the collection and consideration of environmental information, which fulfils the assessment requirements of the EIA Directive and EIA Regulations, including the publication of an Environmental Statement.
Environmental Statement	The document presenting the results of the Environmental Impact Assessment (EIA) process for the Morgan Offshore Wind Project: Generation Assets.
Evidence Plan Process	The Evidence Plan Process is a mechanism to agree upfront what information the Applicant needs to supply to the Planning Inspectorate as part of the Development Consent Order (DCO) application for the Morgan Generation Assets.
Expert Working Group (EWG)	Expert working groups set up with relevant stakeholders as part of the Evidence Plan process.
Habitats Regulations Assessment	A process required by the Habitats Regulations of identifying likely significant effects of a plan or project on a European site and (where likely significant effects are predicted or cannot be discounted) carrying out an appropriate assessment to ascertain whether the plan or project will adversely affect the integrity of the European site. If Adverse Effects on Integrity cannot be ruled out, the latter stages of the process require consideration of the derogation provisions in the Habitats Regulations.
Inter-array cables	Cables which connect the wind turbines to each other and to the offshore substation platforms. Inter-array cables will carry the electrical current produced by the wind turbines to the offshore substation platforms.
Interconnector cables	Cables that may be required to interconnect the Offshore Substation Platforms in order to provide redundancy in the case of cable failure elsewhere.
Marine licence	The Marine and Coastal Access Act 2009 requires a marine licence to be obtained for licensable marine activities. Section 149A of the Planning Act 2008 allows an applicant for a DCO to apply for a 'deemed marine licences' as part of the DCO process.
Maximum Design Scenario (MDS)	The scenario within the design envelope with the potential to result in the greatest impact on a particular topic receptor, and therefore the one that should be assessed for that topic receptor.
Morecambe Offshore Windfarm: Generation Assets	This is the name given to the Morecambe Generation Assets project as a whole (includes all infrastructure and activities associated with the project construction, operations and maintenance, and decommissioning).

MORGAN OFFSHORE WIND PROJECT: GENERATION ASSETS

Term	Meaning
Morgan Array Area	The area within which the wind turbines and offshore substation platforms (OSPs), foundations, inter-array cables, interconnector cables, scour protection, and cable protection forming part of the Morgan Offshore Wind Project: Generation Assets will be located.
Morgan Offshore Wind Project: Generation Assets	This is the name given to the Morgan Generation Assets project as a whole (includes all infrastructure and activities associated with the project construction, operations and maintenance, and decommissioning).
Morgan Offshore Wind Project Generation Assets PEIR	The Morgan Generation Assets Preliminary Environmental Information Report (PEIR) that was submitted to The Planning Inspectorate (on behalf of the Secretary of State) for the Morgan Offshore Wind Project: Generation Assets.
National Policy Statement(s) (NPS)	The current national policy statements for energy published by the Department for Energy Security & Net Zero in 2024.
Non-statutory consultee	Organisations that an applicant may choose to consult in relation to a project who are not designated in law but are likely to have an interest in the project.
Offshore Substation Platform (OSP)	A fixed structure located within the wind farm sites, containing electrical equipment to aggregate the power from the wind turbine generators and convert it into a more suitable form for export to shore.
Offshore Wind Leasing Round 4	The Crown Estate auction process which allocated developers preferred bidder status on areas of the seabed within Welsh and English waters and ends when the Agreements for Lease (AfLs) are signed.
Project Design Envelope (PDE)	The Project Design Envelope sets out the design assumptions and parameters from which the realistic MDSs are drawn for the Morgan Generation Assets Environmental Impact Assessment (EIA). This is also often referred to as the 'Rochdale Envelope' approach.
Scour protection	Protective materials to avoid sediment being eroded away from the base of the foundations as a result of the flow of water.
Statutory consultee	Organisations that are required to be consulted by an applicant pursuant to the Planning Act 2008 in relation to an application for development consent. Not all consultees will be statutory consultees (see non-statutory consultee definition).
The Planning Inspectorate	The agency responsible for operating the planning process for applications for development consent under the Planning Act 2008.
The Secretary of State for Energy Security and Net Zero	The decision maker with regards to the application for development consent for the Morgan Offshore Wind Project: Generation Assets.
Wind turbines	The wind turbine generators, including the tower, nacelle and rotor.

MORGAN OFFSHORE WIND PROJECT: GENERATION ASSETS

Acronyms

Acronym	Description
ABP	Associated British Ports
ADD	Acoustic Deterrent Device
AEOI	Adverse Effect on Integrity
AfL	Agreement for Lease
AHEF	Archaeology and Heritage Engagement Forum
ANIFPO	Anglo-North Irish Fish Producers Organisation
CEA	Cumulative Effects Assessment
Cefas	Centre for Environment, Fisheries and Aquaculture Science
CFLO	Company Fisheries Liaison Officer
CRM	Collision Risk Modelling
CRNRA	Cumulative Regional NRA
DCO	Development Consent Order
Defra	Department for Environment, Food and Rural Affairs
DESNZ	Department for Energy Security and Net Zero
EIA	Environmental Impact Assessment
EnBW	Energie Baden-Württemberg AG
EWGs	Expert Working Groups
FIR	Fishing Industry Representative
FLCP	Fisheries Liaison and Coexistence Plan
HE	Historic England
HRA	Habitats Regulations Assessment
IEF	Important Ecological Features
IoM Defa	Isle of Man Department for Environment, Food and Agriculture
IoMSPC	Isle of Man Steam Packet Company
IS&EFPO	Irish South & East Fish Producers Organisation
ISAA	Information to support the Appropriate Assessment
ISEFPO	Irish South and East Fish Producers Organisation
JNCC	Joint Nature Conservation Committee
LSE	Least Significant Effects
MCA	Maritime and Coastguard Agency
MCZ	Marine Conservation Zone
MDS	Maximum Design Scenario
MFPO	Manx Fish Producers Organisation
MHWS	Mean High Water Springs

MORGAN OFFSHORE WIND PROJECT: GENERATION ASSETS

Acronym	Description
MIEU	Major Infrastructure Environment Unit
MMO	Marine Management Organisation
MNEF	Marine Navigation Engagement Forum
MOD	Ministry of Defence
NFFO	National Federation of Fishermen's Organisations
NIFPO	Northern Ireland Fish Producers' Organisation
NPS	National Policy Statement
NRW	Natural Resources Wales
NSIP	Nationally Significant Infrastructure Project
OSP	Offshore Substation Platform
PEIR	Preliminary Environmental Information Report
PSA	Particle Size Analysis
PSR	Primary Surveillance Radar
RCAHMW	Royal Commission on the Ancient and Historical Monuments of Wales
RSPB	The Royal Society for the Protection of Birds
RYA	Royal Yachting Association
SACs	Special Areas of Conservation
SFF	Scottish Fishermen's Federation
SNCBs	Statutory Nature Conservation Bodies
SPAs	Special Protection Areas
SoCGs	Statements of Common Ground
SoS	Secretary of State
SSC	Suspended Sediment Concentrations
SSSIs	Sites of Special Scientific Interest
SWFPA	Scottish White Fish Producers Association
TCE	The Crown Estate
TWT	The Wildlife Trusts
WCSP	West Coast Sea Products Ltd
ZoI	Zone of Influence

MORGAN OFFSHORE WIND PROJECT: GENERATION ASSETS

Units

Unit	Description
GW	Gigawatt
km	Kilometres
nm	Nautical miles
ft	Feet

1 Technical Engagement Plan

1.1 Introduction

1.1.1 Overview

1.1.1.1 Morgan Offshore Wind Limited (the Applicant), a joint venture of bp Alternative Energy Investments Ltd. (hereafter referred to as bp) and Energie Baden-Württemberg AG (hereafter referred to as EnBW) is developing the Morgan Offshore Wind Project: Generation Assets (hereafter Morgan Generation Assets). The Morgan Generation Assets is a proposed wind farm located in the east Irish Sea. As part of the Offshore Wind Leasing Round 4 by The Crown Estate (TCE), the Applicant entered into Agreement for Lease in early 2023.

1.1.1.2 Figure 1.1 shows the location of the Morgan Array Area, the area within which the wind turbines, foundations, inter-array cables, interconnector cables, offshore export cables and offshore substation platforms (OSPs), which form the Morgan Generation Assets, will be located.

1.1.1.3 As part of the UK government commitment to combat climate change and reduce fossil fuel reliance the generation of clean, renewable energy from offshore wind is an integral component to meet these goals. The current aim for offshore wind in the UK is to generate 50 GW of clean, renewable energy by 2030. Figures released by the Department for Energy Security and Net Zero (DESNZ) show that the UK currently has approximately 14 GW of installed offshore wind capacity (DESNZ, 2023). The Morgan Generation Assets is expected to commence construction in 2026 with the aim of being fully operational by 2030. The Morgan Generation Assets therefore has a critical role to play in reaching UK government aims for offshore wind generation and achieving net zero greenhouse gas emissions.

1.1.1.4 At the same time as developing the Morgan Generation Assets, the joint venture of bp and EnBW is also developing the Mona Offshore Wind Project. Both the Morgan Generation Assets and the Mona Offshore Wind Project Development Consent Order (DCO) applications have been discussed under one Evidence Plan (given the similarities in project location and development timelines) with separate agreement logs for the Morgan Generation Assets and the Mona Offshore Wind Project. This has ensured that any overlap or common issues (including cumulative/in-combination effects) between the two projects have been considered throughout the pre-application phase, while ensuring that any differences are properly and accurately recorded. Furthermore, combining the EWGs for Mona and Morgan has been helpful for stakeholders to engage with two projects simultaneously, and reduce duplication of stakeholder resource.

1.1.1.5 The applicant recognises the importance of early engagement with stakeholders and has engaged from the early development stages of the project through to Application. This ensures stakeholders can influence the project and follow its progress from an early stage.

MORGAN OFFSHORE WIND PROJECT: GENERATION ASSETS

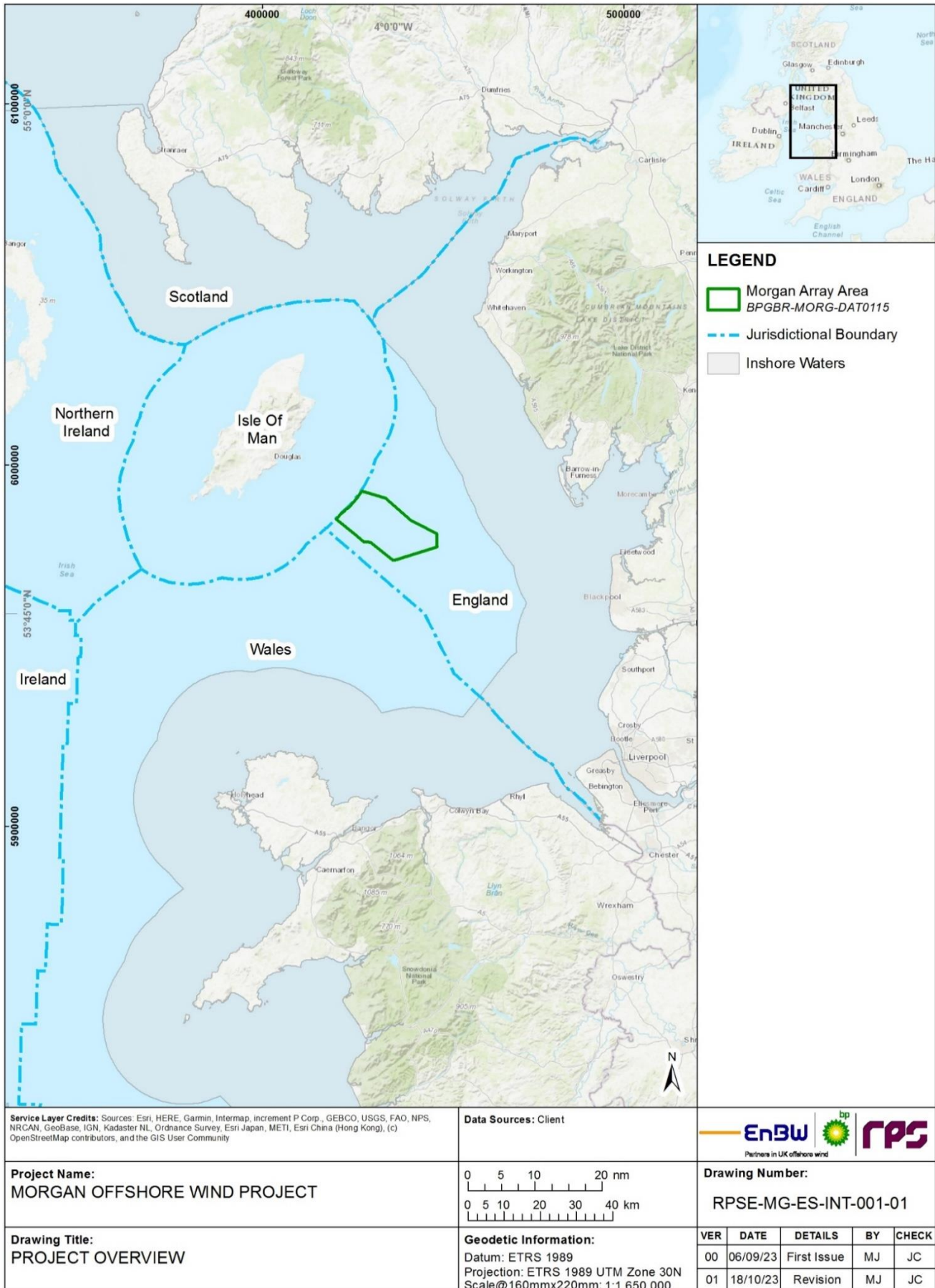


Figure 1.1: Morgan Offshore Wind Project Generation Assets – project overview

1.1.2 Aims of the report

1.1.2.1 Consultation has been undertaken as part of the pre-application phase of the Morgan Generation Assets. The Consultation report (Document Reference E3) describes the consultation process that the Applicant has followed both in terms of the non-statutory consultation and the statutory consultation, and publicity stages as required under sections 42, 47 and 48 of the Planning Act 2008. The Consultation report (Document Reference E3) outlines the feedback received and explains how the feedback received has been taken into account by the Applicant.

1.1.2.2 The purpose of this Technical Engagement Plan is to summarise the technical consultation that has been undertaken for the Morgan Generation Assets, to provide the information and evidence required for Environmental Impact Assessment (EIA) and Habitats Regulations Assessment (HRA) processes. Specifically, this Technical Engagement Plan provides a summary of the stakeholder engagement undertaken for the following topics:

- Physical processes (Volume 2, Chapter 1: Physical processes of the Environmental Statement (Document Reference F2.1))
- Benthic subtidal ecology (Volume 2, Chapter 2: Benthic subtidal ecology of the Environmental Statement (Document Reference F2.2))
- Fish and shellfish ecology (Volume 2, Chapter 3: Fish and shellfish ecology of the Environmental Statement (Document Reference F2.3))
- Marine mammals (Volume 2, Chapter 4: Marine mammals of the Environmental Statement (Document Reference F2.4))
- Offshore ornithology (Volume 2, Chapter 5: Offshore ornithology of the Environmental Statement (Document Reference F2.5))
- Commercial fisheries (Volume 2, Chapter 6: Commercial fisheries of the Environmental Statement (Document Reference F2.6))
- Shipping and navigation (Volume 2, Chapter 7: Shipping and navigation of the Environmental Statement (Document Reference F2.7))
- Marine archaeology (Volume 2, Chapter 8: Marine archaeology and cultural heritage of the Environmental Statement (Document Reference F2.8))
- Other sea users (Volume 2, Chapter 9: Other sea users of the Environmental Statement (Document Reference F2.9))
- Seascape, landscape and visual resources (Volume 2, Chapter 10: Seascape, landscape and visual resources of the Environmental Statement (Document Reference F2.10))
- Aviation and radar (Volume 2, Chapter 11: Aviation and radar of the Environmental Statement (Document Reference F2.11))
- Socio-economics (Volume 2, Chapter 13: Socio-economics of the Environmental Statement (Document Reference F2.13))
- Information to support the Appropriate Assessment (Document Reference E1.1, E1.2, E1.3)
- Marine Conservation Zone Screening Assessment (Document Reference E2).

MORGAN OFFSHORE WIND PROJECT: GENERATION ASSETS

1.1.2.3 Technical consultation was ongoing throughout the pre-application phase of the Morgan Generation Assets, with the Applicant considering feedback for the preparation of assessments within the EIA and HRA.

Structure of the report

1.1.2.4 The report has been structured to introduce the Morgan Generation Assets, present the different groups under which consultation has taken place and then present the technical engagement per topic. The structure of this report is as follows:

- Introduction (section 1.1) – this section introduces the Morgan Generation Assets and the aims of this report
- Evidence Plan Process (section 1.2) – this section introduces the Evidence Plan Process and presents the technical consultation that has been undertaken under the Evidence Plan Process
- Engagement forums (section 1.3) – this section introduces the other engagement forums that have been adopted for the Morgan Generation Assets consultation and presents the technical consultation that has been undertaken under these engagement forums
- Other technical consultation (section 1.4) – this presents the technical consultation that has been undertaken for other topics that are not covered in by the Evidence Plan or engagement forums
- Appendices – these set out the detail of the technical engagement, relevant meeting minutes and any additional information for consultation separated by technical topic. Table 1.1 below outlines the appendices.

Table 1.1: Technical Engagement Plan appendix list.

Appendix
Appendix A: Evidence Plan Steering Group
Appendix B: Evidence Plan Benthic ecology, Fish and shellfish ecology and Physical processes Expert Working Group (EWG)
Appendix C: Evidence Plan Marine mammals EWG
Appendix D: Evidence Plan Offshore ornithology EWG
Appendix E: Marine Navigation Engagement Forum (MNEF)
Appendix F: Archaeology and Heritage Engagement Forum (AHEF)
Appendix G: Commercial fisheries
Appendix H: Shipping and navigation
Appendix I: Aviation and radar
Appendix J: Other sea users
Appendix K: Seascape, landscape and visual resources
Appendix L: Socio-economics

1.2 Evidence Plan Process

1.2.1 Overview

Aims of the Evidence Plan

- 1.2.1.1 The Applicant has undertaken an Evidence Plan Process for the Morgan Generation Assets. The Evidence Plan Process was initially developed by the Major Infrastructure Environment Unit (MIEU) of the Department for Environment Food and Rural Affairs (Defra) to provide a formal mechanism to agree, between applicants and statutory bodies, what information and evidence an applicant should submit in support of an application for a Nationally Significant Infrastructure Project (NSIP), with a specific focus on HRA matters. It is a voluntary process, and an Evidence Plan is a non-legally binding agreement between the Applicant, relevant Statutory Nature Conservation Bodies (SNCBs) and key consultees.
- 1.2.1.2 The Evidence Plan is a mechanism to agree upfront what information the Applicant needs to supply to the Planning Inspectorate as part of the DCO application for the Morgan Generation Assets. Whilst the process was initially aimed at ensuring compliance with the Habitats Regulations (Defra, 2012), it has increasingly also been applied to relevant EIA matters, as well as the Marine Conservation Zone (MCZ) assessment process.
- 1.2.1.3 Both the Mona Offshore Wind Project and the Morgan Generation Assets DCO applications have been discussed under one Evidence Plan with separate agreement logs for the Mona Offshore Wind Project and the Morgan Generation Assets. This has ensured that any overlap or common issues (including cumulative/in-combination effects) between the two projects have been considered throughout the pre-application phase, while ensuring that any differences are properly and accurately recorded.
- 1.2.1.4 As stated in the Defra Guidance Note (Defra, 2012) and the Planning Inspectorate Advice Note 11 (Annex H) (Planning Inspectorate, 2017), an Evidence Plan aims to reduce the risk of NSIPs being delayed by issues relating to the Habitats Regulations (also EIA and MCZ matters for this Evidence Plan) during the evolution of a proposed DCO application, by:
- Giving greater certainty to all participants on the amount and range of evidence an applicant should gather and analyse
 - Helping to address and agree issues early in the pre-application phase in order that robust, streamlined advice can be given and decisions taken. This will also help to reduce the complexity of issues considered during examination, which is governed by strict statutory deadlines
 - Exploring opportunities to avoid, reduce or mitigate potential impacts to designated sites and protected features through changes in project design as well as exploring opportunities for ecological enhancement
 - Demonstrating to the Planning Inspectorate that the data analysis supporting the DCO application is appropriate and agreed with key consultees
 - Focusing the evidence requirements so they are proportionate to the NSIP's potential impacts and costs to applicants are minimised.
- 1.2.1.5 The Planning Inspectorate Advice Note 11 suggests that an Evidence Plan should be designed to fit the DCO application process, including EIA scoping and the formal pre-application consultation process. It is also recommended that the Applicant considers

MORGAN OFFSHORE WIND PROJECT: GENERATION ASSETS

how information collected in order to complete the Evidence Plan may prove helpful in preparing an Environmental Statement (Planning Inspectorate, 2017).

The Evidence Plan Process

- 1.2.1.6 In line with latest best practice (including advice published by Natural England, 2022, the Defra Guidance Note (Defra, 2012) and the Planning Inspectorate Advice Note 11 (Annex H) (Planning Inspectorate, 2017)), it was agreed with all participants (Table 1.2) that the Evidence Plan will cover topics relevant to both HRA and EIA regulations, and assessment requirements for MCZs according to the Marine and Coastal Access Act 2009, including assessment of cumulative and in-combination effects.
- 1.2.1.7 It has considered those topics which affect features designated under:
- The Council Directive 2009/147/EC on the conservation of wild birds (the 'Birds Directive')
 - The Council Directive 92/43/EEC on the Conservation of natural habitats and of wild fauna and flora (as amended) (the 'Habitats Directive') as implemented by the Conservation of Habitats and Species Regulations 2017 (as amended) (the Habitats Regulations)
 - The Conservation of Offshore Marine Habitats and Species Regulations 2017 (as amended)
 - The Wildlife and Countryside Act 1981 (as amended)
 - The ecological features of relevance to the Infrastructure and Planning (Environmental Impact Assessment) Regulations 2017 (as amended)
 - Internationally important wetland sites designated under the Ramsar Convention 1971 ('Ramsar sites') are afforded the same protection as Special Areas of Conservation (SACs) and Special Protection Areas (SPAs) when considering development proposals (as stated in ODPM Circular 06/2005).
- 1.2.1.8 Natural England advice (2022) has recommended that the Evidence Plan Process for offshore wind projects should also be expanded to include other sites designated for ecological features that could be impacted by the project. As outlined above, this includes MCZs designated under the Marine and Coastal Access Act 2009 and Sites of Special Scientific Interest (SSSIs) under the Wildlife and Countryside Act 1981 (as amended).
- 1.2.1.9 The process that the Defra (2012) guidance sets out and the process that this Evidence Plan has followed is to:
- Ensure that sufficient and proportionate information is provided within the relevant assessments of the Morgan Generation Assets, so as to enable the Planning Inspectorate and the Secretary of State (SoS) to form a view on the Likely Significant Effects (LSE) of the Morgan Generation Assets, potential for adverse effects on the integrity of the National Site Network (update to the Conservation of Habitats and Species Regulations 2017 (as amended) included the creation of a National Site Network which comprises the protected sites already designated under the Natura Directives, and any further sites designated under these Regulations) and the conclusions of the EIA
 - Document agreement on information supplied by the Applicant to SNCBs (and other relevant participants)

MORGAN OFFSHORE WIND PROJECT: GENERATION ASSETS

- Provide greater certainty for all participants that the survey methods, baseline data and the methods and analyses used for the EIA and the HRA satisfy the relevant legislation
- Identify issues early on in the process and approach to the resolution of those issues
- Agree the evidence and data that supports the HRA and EIA for the Morgan Generation Assets.

1.2.1.10 An Evidence Plan Steering Group has been established for the Morgan Generation Assets, which has met at key milestones throughout the EIA process. In addition, Expert Working Groups (EWGs) have been established to discuss topic-specific issues with relevant stakeholders. EWG meetings have been held at key stages in the EIA process or when new information becomes available for each topic, to provide the opportunity for stakeholders to provide feedback and advice to inform the proposals at an early stage. Further detail on the remit and discussion topics of the technical EWGs, inputs required throughout the pre-application phase and progress to agreements are set out for each of the technical EWGs in section 1.2.2.

1.2.1.11 During the Evidence Plan Process the relevant information, as provided by the Applicant, was passed to members before meetings (wherever possible) at key project stages or when new information became available. The Steering Group and EWG meetings then provided the opportunity for the stakeholders to review, discuss and provide feedback and advice. A draft of the meeting minutes was shared with all members for comment prior to a final version being issued. Comments on the draft meeting minutes were required after two weeks of the draft minutes being issued and the aim was to issue final minutes within two weeks thereafter.

Roles and responsibilities of the evidence plan stakeholders

1.2.1.12 The Evidence Plan Process was led by the Applicant. Table 1.2 provides a list of all participants involved in the Evidence Plan Process.

MORGAN OFFSHORE WIND PROJECT: GENERATION ASSETS

Table 1.2: Participants in the Evidence Plan Process.

Participants

The Applicant
Applicant's HRA and EIA Consultant (RPS)
The Planning Inspectorate
Natural Resources Wales (NRW)
Natural England
The Marine Management Organisation (MMO)
The Royal Society for the Protection of Birds (RSPB)
The Wildlife Trusts (TWT)
North Wales Wildlife Trust
Joint Nature Conservation Committee (JNCC)
Amphibian and Reptile Conservation Trust (ARC)
Welsh Government (in relation to the Mona Offshore Wind Project)
Local Planning Authorities (LPAs) (in relation to the Mona Offshore Wind Project)

The Steering Group

- 1.2.1.13 In developing the Evidence Plan, stakeholder engagement input was of principal importance. The development and monitoring of the Evidence Plan and its subsequent progress has been undertaken by the Steering Group. The Steering Group comprises the Applicant, Planning Inspectorate, NRW, Natural England, JNCC and the MMO as the key regulatory and SNCBs.
- 1.2.1.14 The Steering Group met at the start of the Evidence Plan Process in November 2021 and then have met at key milestones throughout the programme (see Table 1.4 for timings of Steering Group meetings).
- 1.2.1.15 The Steering Group has overseen the development and monitoring of the Evidence Plan and its subsequent progress. The focus of the Steering Group was initially to agree the aims, scope and content of the Evidence Plan. Subsequent meetings have focused on updating the Steering Group on the progress made within the EWGs and discussing any key issues that arose. The Steering Group meetings have been used as a forum to check progress against the evidence plan milestones, ensuring that there is scope for the Steering Group to guide and inform the process.
- 1.2.1.16 In addition, the Steering Group meetings have provided key project updates to regulators and SNCBs and have ensured clarity on the timescales for inputs from members of the Steering Group to ensure resources were available during these key consultation periods.

The Applicant

- 1.2.1.17 As stated in section 1.1, the Applicant is a joint venture between two leading energy companies (bp and EnBW). These two companies are working together as partners to deliver offshore wind projects in both Offshore Wind Leasing Round 4 and ScotWind Leasing. The Applicant has the following roles and responsibilities:

MORGAN OFFSHORE WIND PROJECT: GENERATION ASSETS

- Act as chair and secretariat
- Organise all Steering Group and EWG meetings, including agreeing dates, times, attendees and agenda for meetings
- Disseminate any relevant information in good time ahead of each Steering group meeting
- Respond to queries on the Morgan Generation Assets
- Circulate meeting minutes after each Steering Group meeting
- Collate, record and take account of any responses and comments provided following meetings.

1.2.1.18 RPS was instructed by the Applicant to lead on the EIA, HRA and Evidence Plan Process for the Morgan Generation Assets. RPS worked on the Applicant's behalf as chair and secretariat.

1.2.1.19 Roles of other parties who formed the steering group are listed below:

The Planning Inspectorate

- Provide comment on the Steering Group process and content. Where appropriate, provide advice under Section 51 of the Planning Act 2008
- The Planning Inspectorate will not provide comment on the merits or concerns of the Morgan Generation Assets.

Natural Resources Wales Advisory

- Provide comments on the offshore elements of the Morgan Generation Assets with responses received in relation to Welsh waters (within and outside of 12 nm from the Welsh coast).

Joint Nature Conservation Committee

- Provide comments on the offshore elements of the Morgan Generation Assets in UK offshore waters (outside of 12 nm from the UK coast).

Natural England

- Provide comments on the offshore elements of the Morgan Generation Assets on English land or in English waters (within and outside of 12 nm from the English coast).

Marine Management Organisation

- Provide comments on all offshore elements of the Morgan Generation Assets in English inshore and offshore waters (below Mean High Water Springs (MHWS), within and outside of 12 nm from the English coast).

Expert Working Groups

1.2.1.20 EWGs were set up to discuss topic specific issues with the relevant stakeholders. The aim of the EWGs was to discuss and agree (where possible) key elements of the EIA and HRA during the pre-application phases. The process has been iterative, and each

MORGAN OFFSHORE WIND PROJECT: GENERATION ASSETS

group has worked through the discussion points and reached agreement as far as possible, during the pre-application phases. Meetings have been held at key stages or when new information became available for each topic (e.g. when survey data had been analysed) to provide the opportunity for stakeholders to provide feedback and advice at an early stage.

1.2.1.21 The EWGs and relevant participants are summarised in Table 1.3.

1.2.1.22 The remit of each EWG was discussed and agreed at the first EWG meeting, with an overview of the remit and inputs required for each of the EWGs set out in section 1.2.2.

Table 1.3: Participants in the EWGs.

Expert Working Group	Participants
Benthic ecology, fish and shellfish and physical processes	Natural England MMO Centre for Environment, Fisheries and Aquaculture Science (Cefas) JNCC NRW Environmental Agency TWT Isle of Man Department for Environment, Food and Agriculture (IoM Defa)
Marine mammals	Natural England JNCC MMO TWT Cefas NRW IoM Defa
Offshore ornithology	Natural England RSPB MMO NRW TWT JNCC IoM Defa

1.2.2 Evidence Plan Technical consultation

Steering group

1.2.2.1 The Steering Group consultation focus and process has been outlined in paragraph 1.2.1.15.

1.2.2.2 The programme of consultation is outlined within Table 1.4. Full meeting minutes and any additional information has been included within Appendix A. Agreement on consultation items has been sought under the EWGs and therefore no agreement logs or summary of agreements are included for the steering group.

MORGAN OFFSHORE WIND PROJECT: GENERATION ASSETS

Table 1.4: Steering group consultation held to date.

*Denotes of relevance to Mona Offshore Wind Project only and not of relevance to the Morgan Generation Assets

Date	Participants	Focus of Consultation
16 November 2021	The Applicant, RPS, Natural England, NRW, MMO, JNCC, Planning Inspectorate	<ul style="list-style-type: none"> Introduce and gain feedback on Evidence Plan Identify key contacts and roles and responsibilities Discuss establishment of EWGs and key contacts for these.
13 December 2021	The Applicant, RPS, Natural England, MMO, JNCC, Environment Agency, Planning Inspectorate	<ul style="list-style-type: none"> Introduce the Mona Offshore Wind Project cable route selection study* To produce high level feedback on the Mona Offshore Wind Project cable routing process* To identify red flags.
14 December 2021	The Applicant, RPS, NRW, Wood ¹	<ul style="list-style-type: none"> Introduce the Mona Offshore Wind Project cable route selection study* To produce high level feedback on the Offshore Wind Project cable routing process* To identify red flags.
20 July 2022	The Applicant, RPS, Natural England, NRW, MMO, JNCC, Planning Inspectorate	<ul style="list-style-type: none"> Approach to HRA Stage 1 Screening and Mona Offshore Wind Project cable route selection study updates*.
14 February 2023	The Applicant, RPS, Natural England, NRW, MMO, JNCC, Planning Inspectorate	<ul style="list-style-type: none"> HRA Stage 1 Screening and Information to Support Appropriate Assessment (ISAA) methodology and Mona Offshore Wind Project cable route selection study updates*.
29 June 2023	The Applicant, RPS, Natural England, NRW, MMO, JNCC, Planning Inspectorate	<ul style="list-style-type: none"> Project updates, HRA Stage 1 Screening and ISAA methodology, Section 42 responses and agreement logs.
17 October 2023	The Applicant, RPS, Natural England, NRW, MMO, JNCC, Planning Inspectorate	<ul style="list-style-type: none"> Project updates, HRA Stage 1 Screening and ISAA methodology and approach to underwater sound impact management.

Benthic ecology, fish and shellfish and physical processes

Overview

1.2.2.3 Benthic ecology, fish and shellfish and physical processes were consulted on in one EWG due to the inter-related nature of the three topics. The remit and input required for the benthic ecology, fish and shellfish and physical processes EWG was as follows:

- To agree survey methodologies and extent (i.e. project specific study areas) to adequately characterise the baseline environment
- To agree survey data analysis methodologies and expected outputs

¹ As part of the Steering group meeting on the 14 December 2021 Wood were participating as they had been employed as a consultant on behalf of the Applicant for the Mona Offshore Wind Project cable route site selection assessment.

MORGAN OFFSHORE WIND PROJECT: GENERATION ASSETS

- To agree any modelling requirements (physical processes/underwater sound), parameters and methodologies
- To agree regional study areas, if relevant
- To discuss the evidence base and agree that the baseline environment information (from desktop and site-specific survey data) is appropriate for the purpose of the relevant assessments, noting any agreed limitations to the baseline data and solutions to address these limitations (e.g. identifying other evidence sources). This may include more detailed survey requirements within Marine Protected Areas (e.g. SACs and MCZs)
- To discuss and agree the impacts to be assessed in the EIA and those that could be scoped out
- To discuss and agree potential for effects on protected habitats and/or species
- To agree assessment methodologies and risk assessment tools for the purposes of the HRA and EIA (including SSSIs and MCZs)
- To discuss and agree the scope of cumulative (for EIA) and in-combination assessments (for HRA)
- To agree approach for determining LSE on European sites, and consideration of other potential impacts on European sites as appropriate
- To discuss the initial findings of the EIA
- To discuss any evidence to support the design of compensatory measures if an 'in principle' Habitats Regulations derogation case and/or Stage 2 MCZ Assessment is deemed to be appropriate by the Applicant
- To agree appropriate avoidance, mitigation and management measures to ensure effects are reduced to an acceptable level. Discussion to include how key mitigation measures are secured in the DCO. Development of project specific mitigation will give full consideration to the mitigation hierarchy (as per Natural England, 2022) throughout the Evidence Plan Process and the pre-application phase
- To discuss proposals from the Applicant for environmental enhancements
- To agree proposed monitoring, if applicable, which is outlined in the Offshore In principle Monitoring Plan (Document Reference J11).

1.2.2.4 The programme of consultation is outlined within Table 1.5. Full meeting minutes and any additional information has been included within Appendix B.

MORGAN OFFSHORE WIND PROJECT: GENERATION ASSETS

Table 1.5: Benthic ecology, fish and shellfish ecology, physical processes EWG consultation held to date

Date	Participants	Focus of Consultation
17 February 2022	The Applicant, RPS, Natural England, MMO, Cefas, JNCC NRW, EA, TWT	<ul style="list-style-type: none"> Introduce and gain feedback on Evidence Plan Discuss stakeholder comments on the survey scopes to date and any further data required Update on the progress of surveys and data analysis.
01 April 2022	The Applicant, RPS, Natural England, MMO, Cefas, JNCC, NRW, TWT	<ul style="list-style-type: none"> Provision of the benthic survey scope of works.
29 November 2022	The Applicant, RPS, MMO, Natural England, JNCC, NRW, Cefas, TWT, IoM	<ul style="list-style-type: none"> Key project updates Presentation of the baseline characterisation and modelling approach Initial outputs of impact assessment
14 March 2023	The Applicant, RPS, MMO, Natural England, JNCC, NRW, Cefas, TWT, IoM	<ul style="list-style-type: none"> To present the updated baseline characterisation for the Morgan Generation Assets Cumulative assessment approach and initial impact assessment approach to agreement.
11 July 2023	The Applicant, RPS, MMO, JNCC, NRW, Cefas, TWT, IoM, Natural England	<ul style="list-style-type: none"> Discussion of statutory consultation responses Updates baselines Agreement log
14 August 2023	The Applicant, RPS, Natural England, MMO, Cefas, JNCC, NRW, TWT, IoM Defa	<ul style="list-style-type: none"> Provision of a technical note presenting the approach to physical processes modelling for the application.
12 October 2023	The Applicant, RPS, Natural England, MMO, Cefas, JNCC, NRW, TWT, IoM Defa	<ul style="list-style-type: none"> To present the updates to the benthic ecology baseline characterisation to address statutory consultation responses. Physical processes and fish and shellfish ecology were not discussed.
07 December 2023	The Applicant, RPS, Natural England, MMO, Cefas, JNCC, NRW, TWT, IoM Defa	<ul style="list-style-type: none"> Presentation of the final impact assessment, final mitigation and monitoring requirements and progress to agreement.

Issues agreed

1.2.2.5 Table 1.6 presents the agreement areas for the benthic ecology, fish and shellfish and physical processes EWG members - the full agreement log is presented in Appendix B. Only NRW, JNCC, Natural England and TWT provided responses in the agreement logs circulated after each EWG meeting. Given JNCC’s remit they mostly declined to comment on the Morgan Generation Assets. Where other EWG members provided additional agreement though responses to EWG meetings, this has been included in Appendix B were relevant.

MORGAN OFFSHORE WIND PROJECT: GENERATION ASSETS
Table 1.6: Issues agreed with the benthic ecology, fish and shellfish and physical processes EWG.

*Denotes of relevance to Mona Offshore Wind Project only and not of relevance to the Morgan Generation Assets

Area where agreement is sought	Topic	EWG member	Progress of agreement
Agreement on the remit and inputs to the EWG.	Benthic ecology, Fish and shellfish ecology and Physical processes	NRW	Agreed
		Natural England	Agreed
		JNCC	Agreed
		TWT	Agreed
Agreement on Ways of Working document, including timescales.	Benthic ecology, Fish and shellfish ecology and Physical processes	NRW	Agreed
		Natural England	Agreed
		JNCC	Agreed
		TWT	Agreed
Agreement on broad approach to surveys.	Benthic ecology	NRW	Agreed
		JNCC	Agreed
		Natural England	Agreed
		TWT	Agreed
Agreement on broad approach to baseline characterisation for benthic subtidal and intertidal* ecology.	Benthic ecology	NRW	Agreed
		JNCC	N/A – defer to Natural England.
		Natural England	Agreed
		JNCC	No comments provided in agreement log by stakeholder
Agreement on broad approach to baseline characterisation for fish and shellfish ecology.	Fish and shellfish ecology	NRW	Agreed
		Natural England	Agreed
		JNCC	Fish and shellfish ecology falls outside of JNCC's remit.
Agreement on broad approach to characterisation for Physical Processes.	Physical Processes	NRW	Agreed
		Natural England	Agreed
		JNCC	Agreed
		CEFAS	Replied with 'no comment'
	Benthic ecology	NRW	Agreed

MORGAN OFFSHORE WIND PROJECT: GENERATION ASSETS

Area where agreement is sought	Topic	EWG member	Progress of agreement
Agreement to the scoping of impacts for the EIA and HRA for benthic subtidal and intertidal* ecology.		Natural England	Agreed
		JNCC	Agreed with caveats
The approach used for determining LSE on European sites with Annex I habitats and features is appropriate and that all sites within the Zone of Influence (Zol) of indirect effect from suspended sediment concentrations (SSC) and changes in physical processes have been identified (noting that the Dee Estuary SAC falls outside the Zol and will be screened out of the LSE screening for the final application).	Benthic ecology	NRW	Agreed
		JNCC	Declined to comment
		Cefas	Replied with 'no comment'
The regional benthic subtidal and intertidal* ecology study area that was defined in the PEIR is appropriate for the baseline characterisation.	Benthic ecology	NRW	Agreed
		JNCC	Declined to comment
		Cefas	Replied with 'no comment'
		Natural England	Agreed
Sufficient site-specific and desktop data has been collated to appropriately characterise the baseline benthic subtidal and intertidal ecology environment to inform the EIA.	Benthic ecology	NRW	Agreed
		Natural England	Agreed
		JNCC	Declined to comment
		Cefas	Replied with 'no comment'
The benthic intertidal ecology baseline, including identification of important ecological features (IEF), is agreed.	Benthic ecology	NRW	Agreed
		JNCC	Declined to comment
		Natural England	Agreed
		Cefas	Replied with 'no comment'
The appropriate designated site (i.e. the Menai Strait and Conwy Bay SAC), and appropriate benthic habitat features, have been identified and taken forward for consideration in the EIA and all other designated sites (including MCZs) with benthic features fall outside the Zol and do not require assessment.	Benthic ecology	JNCC	Declined to comment
		Cefas	Replied with 'no comment'
		Natural England	Agreed
It is appropriate to scope out accidental pollution from the benthic subtidal and intertidal ecology chapter (noting that effects from the release of bentonite (a chemically inert, natural clay) are assessed in the increased in SSC and sediment deposition impact pathway).	Benthic ecology	NRW	Agreed
		JNCC	Declined to comment
		Natural England	Agreed
		Cefas	Replied with 'no comment'
Noting the clarification points bulleted below, the potential impacts assessed represent a comprehensive list of potential effects on benthic	Benthic ecology	NRW	Agreed
		Natural England	No comments provided in agreement log by stakeholder

MORGAN OFFSHORE WIND PROJECT: GENERATION ASSETS

Area where agreement is sought	Topic	EWG member	Progress of agreement
<p>ecology from the Morgan Offshore Wind Project: Generaion Assets.</p> <ul style="list-style-type: none"> Habitat alteration/physical change to another sediment type is fully described and assessed in the assessment of long term habitat loss. Secondary scour is scoped out of Volume 2, Chapter 1: Physical processes and an assessment is therefore no required in the benthic chapter² <p>Impacts associated with the removal of marine growth from foundations during the maintenance phase spans several impact pathways. As such this impact has been considered within two impact pathway assessments: 1) increased SSC and sediment deposition (i.e. in relation to the deposition and smothering element) and 2) in the assessment of the introduction of artificial structures and the potential for this to extend the reef effect in the vicinity of foundations.</p>		JNCC	Declined to comment
		Cefas	Replied with 'no comment'
<p>The list of projects screened into the CEA in the EIA and the in-combination assessment in the HRA are appropriate.</p>	Benthic ecology	JNCC	Declined to comment
		Cefas	Replied with 'no comment'
		Natural England	Agreed
<p>The impact pathways assessed for benthic subtidal ecology will not result in significant effects in EIA terms given the implementation of the measures adopted as part of Morgan Generation Assets.</p>	Benthic ecology	JNCC	Declined to comment
		Cefas	Agreed
<p>No cumulative effects that are significant in EIA terms are predicted</p>	Benthic ecology	Natural England	Agreed
		JNCC	Declined to comment
		Cefas	Agreed
<p>The list of projects screened into the CEA in the EIA and the in-combination assessment in the HRA are appropriate.</p>	Fish and shellfish ecology	Natural England	Agreed
		JNCC	Fish and shellfish ecology falls outside of JNCC's remit.
		Cefas	Agreed
<p>The list of projects screened into the CEA in the EIA and the in-combination assessment in the HRA are appropriate.</p>	Physical processes	Natural England	Agreed
		JNCC	Declined to comment

² Wording included as per the agreement log sent to the EWG. The Applicant has now included an assessment of secondary scour in Volume 2, Chapter 1: Physical processes of the Environmental Statement (Document Reference F2.1)

MORGAN OFFSHORE WIND PROJECT: GENERATION ASSETS

Area where agreement is sought	Topic	EWG member	Progress of agreement
Agreement to the scoping of impacts for the EIA and HRA for fish and shellfish ecology.	Fish and shellfish ecology	NRW	Agreed
		Natural England	Agreed
		JNCC	Fish and shellfish ecology falls outside of JNCC's remit.
Agreement to the scoping of impacts for the EIA and HRA for physical processes.	Physical processes	NRW	Agreed
		Natural England	Agreed
		JNCC	Agreed
		Cefas	Agreed
Agreement on approach to sound modelling and approach to assessment.	Fish and shellfish ecology	Natural England	Agreed
		NRW	Agreed
		JNCC	Fish and shellfish ecology falls outside of JNCC's remit.
Agreement on physical processes modelling strategy for the Environmental Statement.	Physical processes	NRW	Agreed
		JNCC	Defer to NRW
		MMO/Cefas	Agreed
Agreement that the fish and shellfish ecology study area that was defined in the PEIR is appropriate for the baseline characterisation.	Fish and shellfish ecology	NRW	Agreed
		Natural England	Agreed
		JNCC	Fish and shellfish ecology falls outside of JNCC's remit,
		Cefas	Agreed
The appropriate designated sites and appropriate fish and shellfish ecology features have been identified within the baseline characterisation and considered where appropriate in the EIA and HRA.	Fish and shellfish ecology	NRW	Agreed
		Natural England	Agreed
		JNCC	Fish and shellfish ecology falls outside of JNCC's remit
		Cefas	Agreed
The approach used for determining LSE on European sites with Annex II diadromous fish as features is appropriate and that all the relevant sites have been identified.	Fish and shellfish ecology	NRW	Agreed
		JNCC	Fish and shellfish ecology falls outside of JNCC's remit
		Cefas	Agreed
		NRW	Agreed

MORGAN OFFSHORE WIND PROJECT: GENERATION ASSETS

Area where agreement is sought	Topic	EWG member	Progress of agreement
There will be no adverse effects on integrity (AEol) for SACs designated for fish features for any impacts for the project alone or in combination.	Fish and shellfish ecology	JNCC	Fish and shellfish ecology falls outside of JNCC's remit
		Natural England	Agreed
The approach to underwater sound modelling, including soft starts and ramp ups is appropriate, noting that these will not be effective for all fish and shellfish receptors.	Fish and shellfish ecology	Cefas	Agreed
		NRW	Agreed
		JNCC	Fish and shellfish ecology falls outside of JNCC's remit
The approach to underwater sound modelling based on presentation of both static receptors and those moving away from the source is appropriate.	Fish and shellfish ecology	NRW	Agreed
		JNCC	Fish and shellfish ecology falls outside of JNCC's remit
		Cefas	Agreed
Cod and herring should be considered of high sensitivity to underwater sound.	Fish and shellfish ecology	Cefas	Agreed
		NRW	Agreed
		Natural England	Defer to Cefas
		JNCC	Fish and shellfish ecology falls outside of JNCC's remit
The characterisation of sandeel potential is sufficient to inform the EIA with the caveat that PSA data is presented for the Environmental Statement to allow for data cross-checking by stakeholders and that additional Particle Size Analysis (PSA) sample data is extracted from the Cefas OneBenthic tool for the project region to provide a wider context regarding substrate suitability.	Fish and shellfish ecology	NRW	Agreed
		JNCC	Declined to comment
		Natural England	Agreed
The characterisation of herring spawning potential is sufficient to inform the EIA, with the caveat that additional heat mapping of herring larval data is presented for the Environmental Statement, that PSA data is presented for the Environmental Statement to allow for data cross-checking by stakeholders and that additional PSA sample data is extracted from the Cefas OneBenthic tool for the project region to provide a wider context regarding substrate suitability.	Fish and shellfish ecology	NRW	Agreed
		Natural England	Agreed
		JNCC	Fish and shellfish ecology falls outside of JNCC's remit
On the basis that there is no direct overlap with fish features of MCZs of sound contours with the potential to cause injury or behavioural responses, there will be no risk of hindering conservation objectives of any MCZs with fish features (from underwater sound or any other impacts).	Fish and shellfish ecology	NRW	Agreed
		JNCC	Fish and shellfish ecology falls outside of JNCC's remit
		Natural England	Agreed

MORGAN OFFSHORE WIND PROJECT: GENERATION ASSETS

Area where agreement is sought	Topic	EWG member	Progress of agreement
There will be no adverse effects on integrity for SACs designated for fish features for any impacts for the project alone or in combination.	Fish and shellfish ecology	NRW	Agreed
		Natural England	Agreed
		JNCC	Fish and shellfish ecology falls outside of JNCC's remit
For all impacts, other than underwater sound, no significant effects on fish and shellfish receptors are predicted for the project alone and cumulatively.	Fish and shellfish ecology	NRW	Agreed
		JNCC	Fish and shellfish ecology falls outside of JNCC's remit
		Cefas	Agreed
For piling impacts, no significant effects are predicted on fish and shellfish receptors, other than cod and herring during the spawning period.	Fish and shellfish ecology	NRW	No comments provided in agreement log by stakeholder
		JNCC	Fish and shellfish ecology falls outside of JNCC's remit
		Natural England	No comments provided in agreement log by stakeholder
Measures adopted as part of the project (as set out in Table 8.17 of the PEIR) are appropriate and agreed to ensure significant effects are avoided, other than underwater sound.	Fish and shellfish ecology	NRW	Agreed
		JNCC	Fish and shellfish ecology falls outside of JNCC's remit
		Cefas	Agreed
For piling impacts, although a significant effect (in EIA terms) is predicted on herring and cod spawning, the magnitude of any such effects will be reduced through measures set out in the Underwater Sound Management Strategy, which will be agreed with stakeholders post consent.	Fish and shellfish ecology	JNCC	Fish and shellfish ecology falls outside of JNCC's remit

Issues under discussion

- 1.2.2.6 The following areas are still under discussion with the EWG members, the full agreement log is presented in Appendix C.

MORGAN OFFSHORE WIND PROJECT: GENERATION ASSETS
Table 1.7: Issues still under discussion with the benthic ecology, fish and shellfish ecology and physical processes EWG.

Area where agreement is sought	Topic	EWG member	Progress of agreement
The list of projects screened into the Cumulative Effects Assessment (CEA) in the EIA and the in-combination assessment in the HRA are appropriate.	Physical processes	NRW	Under discussion
		JNCC	Declined to comment
		Cefas	No comments in agreement log
Agreement on physical processes modelling strategy	Physical processes	Natural England	Under discussion
The characterisation of herring spawning potential is sufficient to inform the EIA, with the caveat that additional heat mapping of herring larval data is presented for the Environmental Statement, that PSA data is presented for the Environmental Statement to allow for data cross-checking by stakeholders and that additional PSA sample data is extracted from the Cefas OneBenthic tool for the project region to provide a wider context regarding substrate suitability.	Fish and shellfish ecology	Cefas	Under discussion
The characterisation of sandeel potential is sufficient to inform the EIA with the caveat that PSA data is presented for the Environmental Statement to allow for data cross-checking by stakeholders and that additional Particle Size Analysis (PSA) sample data is extracted from the Cefas OneBenthic tool for the project region to provide a wider context regarding substrate suitability.	Fish and shellfish ecology	Cefas	Under discussion
The approach used for determining LSE on European sites with Annex I habitats and features is appropriate and that all sites within the Zone of Influence (Zol) of indirect effect from suspended sediment concentrations (SSC) and changes in physical processes have been identified (noting that the Dee Estuary SAC falls outside the Zol and will be screened out of the LSE screening for the final application).	Benthic ecology	Natural England	Under discussion
There will be no significant effects on physical processes in EIA terms for the project alone or cumulatively with other plans and projects.	Physical processes	JNCC	Declined to comments
		NRW	Defer to JNCC
		Natural England	Under discussion
There will be no adverse effects on integrity for SACs designated for fish features for any impacts for the project alone or in combination.	Fish and shellfish ecology	Cefas	Under discussion
On the basis that there is no direct overlap with fish features of MCZs of sound contours with the potential to cause injury or behavioural responses, there will be no risk of hindering conservation objectives of any MCZs with fish features (from underwater sound or any other impacts).	Fish and shellfish ecology	Cefas	Under discussion

MORGAN OFFSHORE WIND PROJECT: GENERATION ASSETS

Area where agreement is sought	Topic	EWG member	Progress of agreement
The approach to underwater sound modelling, including soft starts and ramp ups is appropriate, noting that these will not be effective for all fish and shellfish receptors.	Fish and shellfish ecology	Natural England	Under discussion
The approach to underwater sound modelling based on presentation of both static receptors and those moving away from the source is appropriate.	Fish and shellfish ecology	Natural England	Under discussion
For piling impacts, although a significant effect (in EIA terms) is predicted on herring and cod spawning, the magnitude of any such effects will be reduced through measures set out in the Underwater Sound Management Strategy, which will be agreed with stakeholders post consent.	Fish and shellfish ecology	Cefas	Under discussion
		Natural England	Under discussion
		NRW	Under discussion
The list of projects screened into the CEA in the EIA and the in-combination assessment in the HRA are appropriate.	Fish and shellfish ecology	NRW	Under discussion
The list of projects screened into the CEA in the EIA and the in-combination assessment in the HRA are appropriate.	Benthic ecology	NRW	Under discussion
The impact pathways assessed for benthic subtidal ecology will not result in significant effects in EIA terms given the implementation of the measures adopted as part of Morgan Generation Assets.	Benthic ecology	Natural England	Under discussion
The measures adopted as part of the Morgan Generation Assets are sufficient and no additional measures are necessary as a result of the assessment conclusions.	Benthic ecology	Natural England	Under discussion
		JNCC	Declined to comment
		NRW	Under discussion
		Cefas	Under discussion
For piling impacts, no significant effects are predicted on fish and shellfish receptors, other than cod and herring during the spawning period.	Fish and shellfish ecology	Cefas	Under discussion
Measures adopted as part of the project (as set out in Table 8.17 of the PEIR) are appropriate and agreed to ensure significant effects are avoided, other than underwater sound.	Fish and shellfish ecology	Natural England	Under discussion
For all impacts, other than underwater sound, no significant effects on fish and shellfish receptors are predicted for the project alone and cumulatively.	Fish and shellfish ecology	Natural England	Under discussion
The appropriate designated site (i.e. the Menai Strait and Conwy Bay SAC), and appropriate benthic habitat features, have been identified and taken forward for consideration in the EIA and all other designated sites (including MCZs) with benthic features fall outside the Zol and do not require assessment.	Benthic ecology	NRW	Under discussion

MORGAN OFFSHORE WIND PROJECT: GENERATION ASSETS

Area where agreement is sought	Topic	EWG member	Progress of agreement
The impact pathways assessed for benthic subtidal ecology will not result in AEoI of the Menai Strait and Conwy Bay SAC (or any other SAC) given the implementation of the measures adopted as part of Morgan Generation Assets,	Benthic ecology	NRW, Cefas	Under discussion
The impact pathways assessed for benthic subtidal ecology will not result in significant effects in EIA terms given the implementation of the measures adopted as part of Morgan Generation Assets.	Benthic ecology	NRW	Under discussion
		Cefas	Under discussion
No cumulative effects that are significant in EIA terms are predicted.	Benthic ecology	NRW	Under discussion
		Cefas	Agreed

Summary of progress

- 1.2.2.7 The Applicant has received agreement on a number of key areas (e.g. agreement to the baseline characterisation, agreement on impacts scoped out). There are a number of agreements outstanding (e.g. agreement on the conclusions of the EIA and HRA) which will continue to be discussed with the EWG.

Marine mammals

Overview

- 1.2.2.8 The remit and input required for the marine mammal EWG was as follows:
- To agree the extent of the study areas for the assessment of the Morgan Generation Assets alone and cumulatively with other plans and projects
 - To agree survey methodologies and extent of survey area to adequately characterise the baseline environment
 - To agree the survey data analysis methodologies and expected outputs
 - To discuss the evidence base and agree that the baseline environment information (from desktop and site-specific survey data) is appropriate for the purposes of the relevant assessment, noting any agreed limitations to the baseline data and solutions to address these limitations (e.g. identifying other evidence sources)
 - To discuss and agree the impacts to be assessed in the EIA and those that can be scoped out
 - To agree assessment methodologies and risk assessment tools for the purposes of the HRA and EIA (including SSSIs and MCZs)
 - To discuss and agree the scope of cumulative/in-combination assessments
 - To agree any modelling requirements, to agree the input parameters, marine mammal hearing thresholds and the project scenarios to be modelled
 - To agree approach for determining LSE on marine mammal features of SACs and consideration of other potential impacts on European sites as appropriate

MORGAN OFFSHORE WIND PROJECT: GENERATION ASSETS

- To discuss any evidence requirements to support the design of compensatory measures if an ‘in principle’ derogation case is deemed to be required by the Applicant
- To agree appropriate avoidance, mitigation and management measures to ensure effects are reduced to an acceptable level. Discussion to include how key mitigation measures are secured in the DCO. Development of project specific mitigation will give full consideration to the mitigation hierarchy (as per Natural England, 2022 advice) throughout the Evidence Plan Process and the pre-application phase
- To discuss proposals from the Applicant for environmental enhancements
- To agree proposed monitoring if applicable, which is outlined in the offshore In Principle Monitoring Plan the Offshore In-principle monitoring plan (Document Reference J11).

1.2.2.9 The outline programme of consultation is outlined within Table 1.8. Full meeting minutes and any additional information has been included within Appendix C. Further details on marine mammal consultation and how it has been addressed in the EIA is presented in Volume 2, Chapter 4: Marine mammals of the Environmental Statement (Document Reference F2.4).

Table 1.8: Marine Mammal EWG consultation held to date and anticipated to take place in the pre-application phase.

Date	Participants	Focus of Consultation
17 February 2022	Natural England, RPS, JNCC, MMO, TWT, Cefas, NRW	<ul style="list-style-type: none"> • Introduce and gain feedback on Evidence Plan. • Discuss stakeholder comments on the survey scopes to date (i.e. prior to Evidence Plan) and any further data required. • Update on the progress of surveys and data analysis.
19 July 2022	Natural England, RPS, JNCC, MMO, TWT, Cefas, NRW	<ul style="list-style-type: none"> • To agree the marine mammal study areas, approach to baseline characterisation and approach to the EIA, including impact scoping.
17 November 2022	Natural England, RPS, JNCC, MMO, TWT, Cefas, NRW	<ul style="list-style-type: none"> • To present the baseline characterisation and discuss and agree the approach to the underwater sound assessment and population modelling approach.
9 February 2023	Natural England, RPS, JNCC, MMO, TWT, Cefas, NRW, IoM Defa	<ul style="list-style-type: none"> • To present the updated baseline characterisation, underwater sound modelling outputs, and cumulative assessment.
29 June 2023	Natural England, RPS, JNCC, MMO, TWT, Cefas, NRW	<ul style="list-style-type: none"> • To present the updated assessment and to discuss statutory consultation responses.
3 August 2023	Manx Wildlife Trust, Manx Whale and Dolphin Watch, IoM Defa	<ul style="list-style-type: none"> • To present the updated assessment and to discuss statutory consultation responses.
10 October 2023	Natural England, RPS, JNCC, MMO, TWT, Cefas, NRW, IoM Defa	<ul style="list-style-type: none"> • Provision of technical note with approach to addressing outstanding items for agreement.

MORGAN OFFSHORE WIND PROJECT: GENERATION ASSETS

Date	Participants	Focus of Consultation
05 December 2023	Natural England, RPS, JNCC, MMO, TWT, Cefas, NRW, IoM Defa	<ul style="list-style-type: none"> Final impact assessment, final mitigation and monitoring requirements, and progress to agreement.

MORGAN OFFSHORE WIND PROJECT: GENERATION ASSETS

Issues agreed

1.2.2.10 The Applicant has agreed the following areas with the EWG members prior to Application, the full agreement log is presented in Appendix C. Only NRW, JNCC and Natural England provided responses in the agreement logs circulated after each EWG meeting. Where other EWG members provided additional agreement through responses to EWG meetings, this has been included in Appendix C. The EWG will continue to meet following the Application submission.

Table 1.9: Issues agreed with the marine mammal EWG.

Area where agreement is sought	EWG member	Progress of agreement
Agreement on the remit and inputs to the EWG.	JNCC	Agreed
	Natural England	Agreed
	MMO/Cefas	No comments provided in agreement log by stakeholder
Agreement on Ways of Working document, including timescales.	JNCC	Agreed
	Natural England	Agreed
	MMO/Cefas	No comments provided in agreement log by stakeholder
Agreement on aerial surveys with respect to marine mammals, in particular the use of an appropriate buffer around the Morgan Array Area.	NRW	Agreed
	MMO/Cefas	No comments provided in agreement log by stakeholder
	Natural England	No comments provided in agreement log by stakeholder
Agreement on extent of Regional Marine Mammal study area to be used for providing additional context (noting that reference populations will be defined on basis of species specific MUs) and for the purposes of CIA screening. Note that LSE screening distances will be agreed separately and will likely take an iterative approach i.e. for a given species screening SACs with increasing distance from the Morgan Offshore Wind Project such that at the point an SAC is screened out, all SACs at greater distance will also be screened out.	Natural England	Agreed
	MMO/Cefas	No comments provided in agreement log by stakeholder
Agreement on approach to the baseline characterisation.	JNCC	Agreed
	NRW	Agreed
	Natural England	No comments provided in agreement log by stakeholder
	MMO/Cefas	MMO defers to Natural England and the other relevant SNCBs
Agreement on approach to sound modelling following clarifications provided in EWG.	NRW	Agreed
	MMO/Cefas	MMO defers to Natural England and the other relevant SNCBs
	Natural England	No comments provided in agreement log by stakeholder
	NRW	Agreed

MORGAN OFFSHORE WIND PROJECT: GENERATION ASSETS

Area where agreement is sought	EWG member	Progress of agreement
Agreement on approach to LSE Screening for Marine Mammals.	MMO/Cefas	MMO defers to Natural England and the other relevant SNCBs
	Natural England	No comments provided in agreement log by stakeholder
Agreement that white beaked dolphin can be scoped out of the EIA and HRA.	JNCC	Agreed
	Natural England	Agreed
	MMO/Cefas	MMO defers to Natural England and the other relevant SNCBs
Agreement that the Celtic and Irish Sea (HP MMMU) is an appropriate study area for dolphin and minke whale.	NRW	Agreed
	JNCC	No comments provided in agreement log by stakeholder
	Natural England	No comments provided in agreement log by stakeholder
	MMO/Cefas	MMO defers to Natural England and the other relevant SNCBs
Agreement on approach to densities and reference populations - harbour porpoise.	Natural England	Agreed
	NRW	Agreed
	JNCC	Agreed
	MMO/Cefas	MMO defers to Natural England and the other relevant SNCBs
Agreement on approach to densities and reference populations - grey seal.	Natural England	Agreed
	NRW	Agreed
	JNCC	Agreed
	MMO/Cefas	MMO defers to Natural England and the other relevant SNCBs
Agreement on approach to densities and reference populations - bottlenose dolphin.	Natural England	Agreed
	NRW	Agreed
	JNCC	Agreed
	MMO/Cefas	MMO defers to Natural England and the other relevant SNCBs
Agreement on approach to densities and reference populations - Risso's dolphin, short beaked dolphin, minke whale.	Natural England	Agreed
	NRW	Agreed
	JNCC	Agreed
	MMO/Cefas	MMO defers to Natural England and the other relevant SNCBs
There will be no adverse effects on integrity on SACs with marine mammal features for the project alone.	JNCC	No comments provided in agreement log by stakeholder
	MMO/Cefas	MMO defers to Natural England and the other relevant SNCBs

MORGAN OFFSHORE WIND PROJECT: GENERATION ASSETS

Area where agreement is sought	EWG member	Progress of agreement
Other than piling and UXO impacts, there will be no significant effects on marine mammal receptors in EIA terms for the project cumulatively.	MMO/Cefas	MMO defers to Natural England and the other relevant SNCBs
Other than piling impacts, there will be no adverse effects on integrity on SACs with marine mammal features for the project in-combination with other plans and projects.	MMO/Cefas	MMO defers to Natural England and the other relevant SNCBs
For piling impacts, although a significant cumulative effect (in EIA terms)/in-combination Adverse Effects On Integrity (AEOI) (in HRA terms) is predicted on bottlenose dolphin, any such effects will be managed and avoided through measures set out in the Piling Strategy, which will be agreed with stakeholders post consent.	MMO/Cefas	MMO defers to Natural England and the other relevant SNCBs
The mitigation and management measures are appropriate to ensure all other significant effects and AEOI are avoided for marine mammal receptors, including the Measures to minimise disturbance to marine mammals and rafting birds.	Natural England	No comments provided in agreement log by stakeholder
	JNCC	No comments provided in agreement log by stakeholder
	MMO/Cefas	MMO defers to Natural England and the other relevant SNCBs
Agreement on the CEA screening area for site investigation surveys and use of a maximum number of site investigation surveys occurring concurrently.	Natural England	Agreed
	JNCC	Agreed
	NRW	Agreed
	MMO/Cefas	MMO defers to Natural England and the other relevant SNCBs
Agreement on the use of the area-based approach for HRA based on Effective Deterrent Range (EDR) and 143 dB threshold.	Natural England	Agreed
	JNCC	Agreed
	NRW	Agreed
Agreement on presenting a 6-year time step in the iPCoD model, assessing temporal Maximum Design Scenario (MDS) and to add in additional cumulative projects.	JNCC	Agreed
	NRW	Agreed
	Natural England	Agreed
	MMO	MMO defers to Natural England and the other relevant SNCBs
Approach to present both with and without ADD and to base the conclusions of the assessment on the impacts which take into account any designed-in measures, including the use of ADDs	JNCC	Agreed
	MMO	Agreed

MORGAN OFFSHORE WIND PROJECT: GENERATION ASSETS

Issues under discussion

1.2.2.11 The following areas are still under discussion with the EWG members, the full agreement log is presented in Appendix C.

Table 1.10: Issues still under discussion with the marine mammal EWG.

Area where agreement is sought	EWG member	Progress of agreement
Agreement on aerial surveys with respect to marine mammals, in particular the use of an appropriate buffer around the Morgan Array Area.	JNCC	Under discussion
Agreement on extent of Regional Marine Mammal study area to be used for providing additional context (noting that reference populations will be defined on basis of species specific MUs) and for the purposes of CIA screening. Note that LSE screening distances will be agreed separately and will likely take an iterative approach i.e. for a given species screening SACs with increasing distance from the Morgan Offshore Wind Project: Generation Assets such that at the point an SAC is screened out, all SACs at greater distance will also be screened out	JNCC	Under discussion
	NRW	Under discussion
Agreement on approach to sound modelling following clarifications provided in EWG.	JNCC	Under discussion
Agreement on approach to LSE Screening for Marine Mammals.	JNCC	Under discussion
Other than UXO impacts, there will be no significant effects on marine mammal receptors in EIA terms for the project alone.	MMO/Cefas, NRW, Natural England	Under discussion
	JNCC	No comments provided in agreement log by stakeholder
There will be no adverse effects on integrity on SACs with marine mammal features for the project alone.	Natural England, NRW	Under discussion
Other than piling and UXO impacts, there will be no significant effects on marine mammal receptors in EIA terms for the project cumulatively.	JNCC, Natural England, NRW	Under discussion
Other than piling impacts, there will be no adverse effects on integrity on SACs with marine mammal features for the project in-combination with other plans and projects.	JNCC, Natural England, NRW	Under discussion
For UXO impacts, although a significant effect (injury) on harbour porpoise is predicted any such effects will be managed and avoided through measures set out in the MMMP, which will be agreed with stakeholders post consent.	MMO/Cefas, JNCC, Natural England, NRW	Under discussion
For piling impacts, although a significant cumulative effect (in EIA terms)/in-combination Adverse Effects On Integrity (AEOI) (in HRA terms) is predicted on bottlenose dolphin, any such effects will be managed and avoided through measures set out in the Piling Strategy, which will be agreed with stakeholders post consent.	JNCC, Natural England, NRW	Under discussion
Agreement on the use of the area-based approach for HRA based on Effective Deterrent Range (EDR) and 143 dB threshold.	MMO	Under discussion
The mitigation and management measures are appropriate to ensure all other significant effects and AEOI are avoided for	NRW	Under discussion

MORGAN OFFSHORE WIND PROJECT: GENERATION ASSETS

Area where agreement is sought	EWG member	Progress of agreement
marine mammal receptors, including the Measures to minimise disturbance to marine mammals and rafting birds.		
Approach to present both with and without Acoustic Deterrent Device (ADD) and to base the conclusions of the assessment on the impacts which take into account any designed-in measures, including the use of ADDs.	NRW, Natural England	Under discussion

Summary of progress

1.2.2.12 The Applicant has received agreement on a number of key areas (e.g. agreement to the baseline characterisation, agreement on species scoped out, agreement on the approach to sound modelling and agreement on the densities and reference populations on which the assessment is based). There are a number of agreements outstanding (e.g. agreement on the conclusions of the EIA and HRA) which will be discussed with the EWG ahead of the application for consent.

Offshore ornithology

Overview

1.2.2.13 The remit and input required for the offshore ornithology EWG is as follows:

- To agree survey methodologies and extent to adequately characterise the baselines and to address key issues in relation to offshore ornithological features, particularly in relation to features of SPAs and potential SPAs (pSPAs), if appropriate, rare and vulnerable birds (as listed on Annex I of the Birds Directive), and for regularly occurring migratory species
- To agree the survey data analysis methodologies and expected outputs
- To agree any modelling requirements, parameters and methodologies
- To discuss the evidence base and agree that the baseline environment information (from desktop and site specific survey data) is appropriate for the purposes of the relevant assessments, noting any agreed limitations to the baseline data and solutions to address these limitations (e.g. identifying other evidence sources). This may include more detailed survey requirements within Marine Protected Areas (e.g. SPAs)
- To discuss and agree the scope of the assessments of potential effects on key species, including those that may be scoped out of the assessment
- To agree analytical and assessment methodologies and risk assessment tools for the purposes of the HRA and EIA (including SSSIs)
- To discuss and agree the scope of cumulative/in-combination assessments
- To agree approach for determining LSE on European Sites, and consideration of other potential impacts on European sites as appropriate
- To discuss any evidence requirements to support the design of compensatory measures if an ‘in principle’ HRA derogation case is deemed to be required by the Applicant

MORGAN OFFSHORE WIND PROJECT: GENERATION ASSETS

- To agree appropriate avoidance, mitigation and management measures to ensure effects are reduced to an acceptable level. Discussion to include how key mitigation measures are secured in the DCO. Development of Morgan Generation Assets specific mitigation will give full consideration to the mitigation hierarchy (as per Natural England, 2022 advice) throughout the Evidence Plan Process and the pre-application phase
- To discuss any proposals from the Applicant for environmental enhancements
- To agree proposed monitoring if applicable, which would be outlined in the Offshore in-principle monitoring plan (Document Reference J11).

1.2.2.14 The outline programme of meetings is set out within Table 1.11. Full meeting minutes and any additional information has been included within Appendix D. Further details on offshore ornithology consultation and how it has been addressed in the EIA is presented in Volume 2, Chapter 5: Offshore ornithology of the Environmental Statement (Document Reference F2.5).

1.2.2.15 The Applicant has agreed the following areas with the EWG members, the full agreement log is presented in Appendix D. Only NRW, JNCC and Natural England provided responses in the agreement logs circulated after each EWG meeting. Where other EWG members provided additional agreement though responses to EWG meetings, this has been included in Appendix D.

1.2.2.16 While not included in the agreement log, the applicant has engaged with the EWG on the HRA methodology. The Applicant prepared an updated HRA methodology technical note to address stakeholder comments on the HRA methodology provided through the statutory consultation. This updated methodology was presented at the fourth EWG meeting. Natural England, NRW and JNCC provided ‘in-principle’ agreement on the approach with a number of comments and requested amendments.

1.2.2.17 The Applicant modified the methodology to address the comments and re-submitted the methodology to the EWG at the seventh EWG meeting. No further comments were received from stakeholders on this methodology.

Table 1.11: Offshore ornithology EWG consultation held to date and anticipated to take place.

Date	Participants	Focus of Consultation
18 February 2022	Natural England, RSPB, MMO, JNCC, TWT	<ul style="list-style-type: none"> • Introduce and gain feedback on Evidence Plan • Discuss stakeholder comments on the survey scopes to date (i.e. prior to Evidence Plan) and any further data required • Update on the progress of surveys and data analysis.
27 May 2022	Natural England, RSPB, MMO, JNCC, TWT	<ul style="list-style-type: none"> • Provision of technical notes outlining the Applicants approach to the offshore ornithology baseline characterisation, displacement and Collision Risk Modelling (CRM) technical reports.
13 July 2022	Natural England, RSPB, MMO, JNCC, TWT	<ul style="list-style-type: none"> • Agree the approach to baseline characterisation, cumulative study area to agree the approach to EIA, including impact scoping • Presentation of the interim baseline characterisation and discuss and agree the approach to data analyses, including relevant modelling techniques and parameters.
30 November 2022	Natural England, RSPB, MMO, JNCC, TWT	<ul style="list-style-type: none"> • To agree key receptor species and to present the interim assessment of impacts and discuss and agree the relevant regional populations and protected sites/qualifying interests for assessment and approach to HRA Stage 1 screening.

MORGAN OFFSHORE WIND PROJECT: GENERATION ASSETS

Date	Participants	Focus of Consultation
23 February 2023	Natural England, RSPB, MMO, JNCC, TWT, IoM Defa	<ul style="list-style-type: none"> To agree key receptor species and to present the interim assessment of impacts and discuss and agree the relevant regional populations and protected sites/qualifying interests for assessment and approach to HRA Stage 1 screening Discuss and agree scope of cumulative impact assessment and transboundary considerations To discuss and agree population assessment approaches and thresholds for LSE and integrity.
05 May 2023	RSPB, MMO, JNCC, TWT, IoM Defa	<ul style="list-style-type: none"> Provision of the updated methodology for offshore ornithology HRA Stage 1 screening and the ISAA.
30 June 2023	Natural England, RSPB, MMO, JNCC, TWT, IoM Defa	<ul style="list-style-type: none"> Update to baseline characterisation for complete baseline data set and discuss and agree any amendments to previously agreed approaches. Statutory consultation responses.
10 July 2023	Natural England, RSPB, MMO, JNCC, TWT, IoM Defa	<ul style="list-style-type: none"> Provision of the technical note presenting the power analysis undertaken at the request of the EWG.
19 October 2023	Natural England, RSPB, MMO, JNCC, TWT, IoM Defa	<ul style="list-style-type: none"> Presentation of updated baseline characterisation and impact assessment for the Environmental Statement.
8 December 2023	Natural England, RSPB, MMO, JNCC, TWT, IoM Defa	<ul style="list-style-type: none"> Presentation of final impact assessment, comments on draft Environmental Statement, final mitigation and monitoring requirements.
8 March 2024	Natural England, RSPB, MMO, JNCC, TWT, IoM Defa	<ul style="list-style-type: none"> Presentation of final impact assessment and HRA. Discussion on remaining outstanding agreements.

Issues agreed

1.2.2.18 The Applicant has agreed the following areas with the EWG members, the full agreement log is presented in Appendix D. Only NRW, JNCC and Natural England provided responses in the agreement logs circulated after each EWG meeting. Where other EWG members provided additional agreement though responses to EWG meetings, this has been included in Appendix D.

MORGAN OFFSHORE WIND PROJECT: GENERATION ASSETS

Table 1.12: Issues agreed with the offshore ornithology EWG.

Area where agreement is sought	EWG member	Progress of agreement
Agreement on the remit and inputs to the EWG.	NRW	Agreed
	JNCC	Agreed
	Natural England	Agreed
Agreement on Ways of Working document, including timescales.	NRW	Agreed
	JNCC	Agreed
	Natural England	Agreed
Agreement on broad approach to aerial surveys.	NRW	Agreed
	JNCC	Agreed
	Natural England	Agreed
Agreement on the approach to baseline characterisation.	JNCC	Agreed
	NRW	Agreed
	Natural England	Agreed
Agreement on the approach to displacement.	JNCC	Agreed
	Natural England	Agreed
	NRW	No comments provided in agreement log by stakeholder
Agreement to the approach to the approach to CRM.	JNCC	Agreed
	Natural England	Agreed
	NRW	No comments provided in agreement log by stakeholder
Agreement on the approach to identification of sites and features in the HRA Stage 1 Screening.	JNCC	Agreed
	NRW	No comments provided in agreement log by stakeholder
	Natural England	Agreed
Agreement on approach to LSE Screening using outputs for collision risk modelling, displacement assessment and associated apportioning paper.	Natural England	Agreed
	JNCC	No comments provided in agreement log by stakeholder
	NRW	No comments provided in agreement log by stakeholder
	NRW	Agreed

MORGAN OFFSHORE WIND PROJECT: GENERATION ASSETS

Area where agreement is sought	EWG member	Progress of agreement
Agreement on the provision, scope and results of the power analysis.	JNCC	No comments provided in agreement log by stakeholder
	Natural England	Agreed
Agreement on the methodology used to improve auk ID rates.	JNCC	Agreed
	NRW	No comments provided in agreement log by stakeholder
	Natural England	Agreed
Agreement on approach to CRM for migratory seabirds.	JNCC	Agreed
	NRW	No comments provided in agreement log by stakeholder
	Natural England	Agreed
Agreement on approach to CRM for migratory seabirds	JNCC	Agreed
	NRW	No comments provided in agreement log by stakeholder
	Natural England	Agreed
Agreement on approach to estimating regional breeding populations.	JNCC	No comments provided in agreement log by stakeholder
	Natural England	No comments provided in agreement log by stakeholder
There will be no significant effects on ornithology receptors in EIA terms for the project alone.	JNCC	No comments provided in agreement log by stakeholder
Agreement on proposed foraging ranges to be used in EIA and for apportioning impacts to designated sites.	JNCC	Agreed
	NRW	Agreed
	Natural England	Agreed
Use of the latest species-specific avoidance rates from Ozsanlav-Harris et al. (2023) in the non-migratory CRM.	JNCC	No comments provided in agreement log by stakeholder
	NRW	Agreed
	Natural England	Agreed

MORGAN OFFSHORE WIND PROJECT: GENERATION ASSETS

Issues under discussion

1.2.2.19 The following areas are still under discussion with the EWG members, the full agreement log is presented in Appendix D.

Table 1.13: Issues under discussion with the offshore ornithology EWG.

Area where agreement is sought	EWG member	Progress of agreement
Agreement on broad approach to aerial surveys.	RSPB	Under discussion
Agreement on approach to estimating regional breeding populations.	NRW	Under discussion
Agreement on approach to cumulative assessment for projects where impact magnitudes are unavailable.	Natural England	Under discussion
	JNCC	Under discussion
	NRW	Under discussion
There will be no significant effects on ornithology receptors in EIA terms for the project alone.	Natural England	Under discussion
	NRW	Under discussion
There will be no adverse effects on integrity on SPAs with ornithology features for the project alone.	Natural England	Under discussion
	JNCC	Under discussion
	NRW	Under discussion
There will be no significant effects on ornithology receptors in EIA terms for the project cumulatively with other plans and projects.	Natural England	Under discussion
	JNCC	Under discussion
	NRW	Under discussion
There will be no adverse effects on integrity on SPAs with ornithology features for the project in-combination with other plans and projects.	Natural England	Under discussion
	JNCC	Under discussion
	NRW	Under discussion
The mitigation and management measures are appropriate to ensure significant effects and AEOI are avoided for marine ornithological receptors.	Natural England	Under discussion
	JNCC	Under discussion
	NRW	Under discussion

Summary of progress

1.2.2.1 The Applicant has received agreement on several key areas (e.g. agreement to the baseline characterisation, agreement on approach to displacement and CRM analysis). There are some agreements outstanding (e.g. agreement on the conclusions of the EIA and HRA and results of the cumulative effects assessment and in-combination assessment). Further engagement is planned with the EWG.

1.3 Engagement forums

1.3.1 Marine Navigation Engagement Forum

Aims of the Marine Navigation Engagement Forum

1.3.1.1 A Marine Navigation Engagement Forum (MNEF) was established by the three Irish Sea Round 4 offshore wind projects (Morgan Generation Assets, Mona Offshore Wind Project and Morecambe Offshore Windfarm: Generation Assets). The objective of the MNEF is to provide a platform for the exchange of information, knowledge and experience, allowing marine developers and relevant shipping and navigation stakeholders to coexist in the marine environment.

1.3.1.2 The overarching strategy was to establish and actively maintain a structured basis by which the project and relevant shipping and navigation stakeholders engage with each other and share information, evidence and feedback. The objectives are:

1. To allow marine developers the opportunity to present their plans for development of offshore projects to representatives of the shipping and navigation stakeholders
2. To enable the project to share details on the proposed evidence base (quantitative and qualitative data, material and evidence) being used for consideration of shipping and navigation within the development of the Morgan Generation Assets. To also enable shipping and navigation stakeholders to share and contribute relevant data and evidence to the Morgan Generation Assets
3. To enable the project to share details on the proposed methodologies being used for consideration of shipping and navigation within the development of the Morgan Generation Assets and consider comments that may be provided by shipping and navigation stakeholders
4. To provide shipping and navigation stakeholders the opportunity to put forward suggestions and observations, to promote better understanding of their existing and planned future operations, specifically in the areas to be developed
5. To encourage dialogue on key concerns and issues, for both shipping and navigation stakeholders and marine developers
6. To quantify the degree to which co-existence can be reasonably delivered and to discuss the principles and methodological processes to be applied to the development of mitigation options
7. To discuss co-existence offshore working practices and communication from both the developer's and the shipping and navigation stakeholders' point of view, where required
8. To develop potential mitigation options and solutions to mitigate/minimise/manage impact the marine development may cause to shipping and navigation stakeholders
9. To consider potential cumulative effects of marine developments and other appropriate marine stakeholders
10. To maintain a formal record of discussions between the interested parties in order to provide evidence to regulatory bodies and others on areas of agreement and disagreement

MORGAN OFFSHORE WIND PROJECT: GENERATION ASSETS

11. To communicate information through MNEF meetings to a wider audience in the organisations represented.

1.3.1.3 The MNEF aims to focus on matters which relate to:

- Risk to safety of marine operations and navigation
- Impact on marine operations and navigation.

1.3.1.4 The MNEF aims to ensure that relevant shipping and navigation stakeholders and marine developers views and needs are discussed and considered during the pre-construction, construction, operations and maintenance, and decommissioning phases of the Morgan Generation Assets.

The MNEF process

1.3.1.5 The MNEF includes key user groups and organisations which are identified as having potential shipping and navigation interface with the Morgan Generation Assets and are invited into the MNEF. Interests of the fishing industry are represented and co-ordinated through the Fisheries Industry Representative and are discussed in more detail in section 1.4. The MNEF met regularly during the pre-application phase to complete key tasks, which included:

- Agree the existing baseline information and identify other relevant datasets to use in the assessment
- Agree maximum design parameters for the assessment(s)
- Agree methods for impact assessment(s) (including where possible interpretation of impact and levels of significance)
- Discussions on key potential impacts
- Agree on methods employed to determine significance of effect
- Provide feedback on key areas and progress in each topic area
- Looking ahead to submission targets.

1.3.1.6 The MNEF meetings provided an opportunity for stakeholders to discuss, provide feedback and advice on key project updates. A draft of the meeting minutes, and the slide pack from the meetings, was shared with all members for comment prior to a final version being issued. Comments on the draft meeting minutes were required within two weeks of the draft minutes being issued and the aim was to issue final minutes within two weeks thereafter.

Roles and responsibilities of the MNEF

1.3.1.7 The MNEF includes key user groups and organisations which are identified as having potential shipping and navigation interface with the Morgan Generation Assets and are invited into the MNEF, see Table 1.14. All organisations were asked to commit to ensuring, insofar as is reasonable and practical, consistent representation at meetings to aid continuity and maximise value and to take individual responsibility for delivering actions within agreed timescales.

MORGAN OFFSHORE WIND PROJECT: GENERATION ASSETS

Table 1.14: Participants in the MNEF process¹.

¹The following organisations were invited to the MNEF but either declined the invitation or opted to be included in communications only: Dublin Port, Harbours Division (IoM Gvnt), MMO, P&O, Tailwind.

User group	Organisation
Developers coordinating the MNEF	
Marine Developers	bp and EnBW (Morgan Generation Assets, Mona Offshore Wind Project and Morgan and Morecambe Offshore Wind Farms Transmission Assets Development Partners)
Marine Developers	Flotation Energy (Morecambe Offshore Wind Farm and Morgan and Morecambe Offshore Wind Farms Transmission Assets Development Partners)
Marine Developer Representative	RPS (Morgan Generation Assets EIA and HRA lead)
Marine Developer Representative	NASH Maritime (Morgan Generation Assets shipping and navigation consultant)
All other MNEF members	
Aggregate Industry	Boskalis
Commercial Navigation Users	WS Mezeron
Emergency Service	Lancashire Fire and Rescue
Ferry Operator	Isle of Man Steam Packet Company Limited (IoMSPC)
Ferry Operator	Seatruck Group
Ferry Operator	Stena Line
Ferry Operator	P&O Ferries
Fishing Industry	Anglo-North Irish Fish Producers Organisation (ANIFPO)
Fishing Industry	Isle of Man Fishermen
Fishing Industry	Irish South & East Fish Producers Organisation (IS&EFPO)
Fishing Industry	National Federation of Fishermen's Organisations (NFFO)
Fishing Industry	Northern Ireland Fish Producers' Organisation (NIFPO)
Fishing Industry	Scottish Fishermen's Federation (SFF)
Fishing Industry	Scottish White Fish Producers Association (SWFPA)
Fishing Industry	Sea-Fisheries Protection Authority (SFPA)
Fishing Industry	Fishing Industry Representative
Fishing Industry	Welsh Fishermen's Association - Cymdeithas Pysgotwyr Cymru,
Fishing Industry	West Coast Sea Products Ltd
Governmental Department	MMO
Governmental Department	Ministry of Defence (MOD)
Governmental Department	IoM Government
Marine Developers	Orsted
National Body (Recreation)	Royal Yachting Association (RYA)
National Body (Recreation)	Cruising Association
National Institution	Royal National Lifeboat Institution

MORGAN OFFSHORE WIND PROJECT: GENERATION ASSETS

User group	Organisation
Oil & Gas Operators	ENI
Oil & Gas Operators	Harbour Energy
Oil & Gas Operators	Spirit Energy
Port Operators	Associated British Ports (ABP)
Port Operators	Belfast Harbour
Port Operators	Dublin Port
Port Operators	Peel Ports
Port Operators	Port of Mostyn
Port Operators	Warrenpoint Harbour
Statutory Authority	Maritime and Coastguard Agency (MCA)
Statutory Authority	His Majesty's Maritime Coastguard (HMCG)
Statutory Authority	Trinity House Lighthouse Service (THLS)
Statutory Authority	Northern Lighthouse Board
Statutory Authority	North Western Inshore Fisheries And Conservation Authority (NW IFCA)
Trade Association	International Chamber of Shipping
Trade Association	Irish Chamber of Shipping
Trade Association	UK Chamber of Shipping

- 1.3.1.8 Other individuals or organisations were identified as agreed from time to time by the MNEF for the purpose of briefing, sharing knowledge or to seek directly any views or information relative to the business of the MNEF. These may include, for example, Representatives of District or County Councils, and local or national government.
- 1.3.1.9 There was no third party right to attend the MNEF meetings, although members will consider carefully any request to put a view directly to the MNEF which concerns maritime navigation. The MNEF, as a whole, may invite individuals or bodies to attend meetings for the purpose of briefing, sharing knowledge or to seek directly any views or information relative to the business of the MNEF.
- 1.3.1.10 NASH Maritime Ltd were appointed to establish and maintain a MNEF for relevant maritime stakeholders. The forum also engaged relevant government, regulatory agencies and statutory consultees. NASH Maritime Ltd. has the following responsibilities:
- Administer stakeholder consultation log as a factual record of meetings
 - Liaise with stakeholders/attendees to disseminate meetings
 - Collate meeting materials/disseminate pre-meeting
 - Facilitate meetings and progress the meeting agenda
 - Provide records of meetings including meeting minutes.

MORGAN OFFSHORE WIND PROJECT: GENERATION ASSETS

MNEF consultation

Overview

1.3.1.11 The purpose of the MNEF is to provide a platform for the exchange of information, knowledge and experience that will enable marine developers, and relevant shipping and navigation stakeholders to coexist in the marine environment.

1.3.1.12 The outline programme of meetings is outlined within Table 1.15. Full meeting minutes and any additional information has been included within Appendix E.

Table 1.15: MNEF consultation held to date and anticipated to take place in the pre-application phase.

Date	Participants	Focus of consultation
MNEF 1 10 November 2021	The Applicant, RPS, Seatruck Ferries, IoMSPC, Stena Line, Spirit Energy, Conwy Fields, Harbour Energy, Boskalis Westminster, CFLO, Irish Chamber of Shipping, Cobra – Flotation-Energy, Peel Ports, ABP, Belfast Harbour Commissioners, The Port of Mostyn, MCA, Trinity House, NASH Maritime	<ul style="list-style-type: none"> • Project introduction and development process • Project timeline • Project Design (Scoping) and Refinement • Community and Maritime Engagement • MNEF purpose and ToR • Site selection in relation to shipping and navigation constraints • Impacts of COVID-19 on data collection
MNEF 2 06 May 2022	The Applicant, RPS, Seatruck Ferries, IoMSPC, Stena Line, Spirit Energy, Conwy Fields, Harbour Energy, Boskalis Westminster, CFLO, UK Chamber of Shipping, Cobra – Flotation Energy, Peel Ports, ABP, Belfast Harbour Commissioners, Port of Holyhead, The Port of Mostyn, MMO, MOD, Trinity House, NASH Maritime	<ul style="list-style-type: none"> • Project update - review of key themes from previous meeting • Data Collection and NRA • Impacts to ferry operators • Relation of impacts on ferry routes with regulation and guidance • Sensitivity of ferry operator schedules. • Impacts of projects on Isle of Man economy/society • Extent of incident data • Safety of navigating in gaps • Consequences of allisions with wind turbines.
MNEF 3 10 October 2022	The Applicant, RPS, Royal HaskoningDHV, Flotation Energy, IoM Department of Infrastructure, Seatruck Ferries, IoMSPC, Cruising Association, Stena Line, Spirit Energy, Harbour Energy, CFLO, Kirkcudbright, UK Chamber of Shipping, Peel Ports, RYA, MCA, Trinity House, NASH Maritime (in addition approximately five MNEF attendees attended on MS Teams as 'unknown user')	<ul style="list-style-type: none"> • Project update • Application process • Cumulative impacts of multiple projects on ferry operations (responding to stakeholder feedback) • How the cumulative impacts will be assessed or examined • Introduction to Morgan/Morecambe combined transmission project.

MORGAN OFFSHORE WIND PROJECT: GENERATION ASSETS

Date	Participants	Focus of consultation
MNEF 4 18 January 2023	The Applicant, RPS, RWE, Cruising Association, Floatation Energy, IoM Department of Infrastructure, IS&EFPO, NIFPO, Harbour Energy, MMO, MOD, IoMSPC, MCA, Orsted, Port of Mostyn, Peel Ports, RYA, Seatruck Ferries, Spirit Energy, Stena Line, CFLO, UK Chamber of Shipping, NASH Maritime	<ul style="list-style-type: none"> • Project update • Cumulative assessment approach and progress • Update on assessment work completed since MNEF 3 – HAZID workshop, PEIR deliverables Morgan NRA, cumulative regional NRA and bridge simulations • PEIR process and statutory consultation • Project revisions and commitments • Planned activities and next steps.
MNEF 5 21 September 2023	The Applicant, RPS, Boskalis Westminster, Cairn Risk, Cobra – Floatation Energy, Harbour Energy, IoM Department of Infrastructure, Irish South & East Fish Producers Organisation, MCA, NASH Maritime, Orsted, Port of Mostyn, Royal HaskoningDHV, Saipem, SFF, Scottish White Fish Producers Association, Seatruck Ferries, Spirit Energy, Stena Line, United Utilities	<ul style="list-style-type: none"> • Project update • Cumulative assessment approach and progress • PEIR assessment and key findings • Project revisions • Update on assessment work undertaken since MNEF 4 • DCO application process • Planned activities and next steps.
MNEF 6 08 February 2024	The Applicant, ANIFPO, Cairn Risk, CFLO, Chamber of Shipping, Floatation Energy and Cobra, Harbour Energy, Irish South & East Fish Producers Organisation, IoMSPC, NASH Maritime, Orsted, Port of Mostyn, Royal HaskoningDHV, RYA, Seatruck Ferries, Spirit Energy, Trinity House, Warrenpoint Harbour	<ul style="list-style-type: none"> • Project update • Update on assessment work undertaken since MNEF 5 and consideration of Mooir Vannin Offshore Wind Farm) • DCO application process • Planned activities and next steps. • Cumulative assessment approach and progress

Issues agreed

1.3.1.13 Table 1.16 presents the items agreed with the MNEF.

Table 1.16: Issues agreed with the MNEF

Area where agreement is sought	Progress of agreement
Baseline information and data used to inform assessment	Agreed
Maximum design parameters for the assessment(s)	Agreed
Impact assessment methodology (including interpretation of impact and levels of significance)	Agreed

Issues under discussion

- 1.3.1.14 Potential impacts on commercial operators in adverse weather conditions is still under discussion with the MNEF members. This relates to commercial impacts associated with the potential for additional delays and cancellations to ferry services. In addition, co-existence of commercial fisheries still under discussion with the MNEF members (see section 1.4.1).

Summary of progress

- 1.3.1.15 There were six meetings of the MNEF during the pre-application process. The forum was engaged throughout the development of the Morgan Generation Assets environmental impact assessment. Forum meetings have been held to discuss key elements of the project at each stage of the assessment process, EIA Scoping, PEIR and the development of the shipping and navigation assessment for the Environmental Statement.
- 1.3.1.16 The Applicant has received agreement on a number of key areas including baseline data and surveys to inform the assessment work, parameters for assessment and the impact assessment methodology, and the maximum design parameters which informed the assessment.
- 1.3.1.17 Potential cumulative impacts were raised by the MNEF and identified early in the PEIR stage assessment. The Applicant has worked collaboratively with other Round 4 offshore wind farm developers in the Irish Sea to address these potential cumulative impacts. This has included the development of the Cumulative Regional NRA (CRNRA) (Volume 4, Annex 7.1: Navigation risk assessment of the Environmental statement (Document Reference F4.7.1)). The CRNRA has looked at the risks and hazards associated with the potential cumulative impacts of the Round 4 Irish sea offshore wind projects – Morgan Offshore Wind Project, Mona Offshore Wind Project and Morecambe Offshore Windfarm.
- 1.3.1.18 The objective of the CRNRA is to enable The Planning Inspectorate and stakeholders to engage with, and understand, the potential cumulative effects of the three Round 4 Irish sea projects. Adopting a regional (collaborative) approach to assessment has enabled the individual projects to quantify and manage the cumulative effects in a coordinated, consistent, and efficient manner.

1.3.2 Archaeology and Heritage Engagement Forum

Aims of the Archaeology and Heritage Engagement Forum

- 1.3.2.1 The aims of the offshore Archaeology and Heritage Engagement Forum (AHEF) were to identify and agree the information the Applicant will supply to the Planning Inspectorate as part of the DCO for the Morgan Generation Assets.
- 1.3.2.2 The AHEF aimed to address and decide upon issues early on in pre-application process, streamlining these decisions whilst also focussing on the evidence requirements which aim to be proportionate to the potential impacts.
- 1.3.2.3 The overall aim of the forum is to ensure that there is a reduction in the risk of delay to the Morgan Generation Assets due to issues related to archaeology and heritage during the DCO and marine licence application process by:

MORGAN OFFSHORE WIND PROJECT: GENERATION ASSETS

- Ensuring that sufficient and proportionate information in the assessment of the Morgan Generation Assets were provided, the Applicant worked jointly together with the Applicant from the Mona Offshore Wind Project.
- Documenting agreement on information supplied by the Applicant to archaeology stakeholders
- Outlining how baseline data and the methods and analyses used for the EIA satisfies the relevant legislation
- Identification of issues early in the EIA process and approach to the resolution of those issues
- Agreeing the results of the technical reports that support the EIA for the Morgan Generation Assets
- Providing a direct link between the EIA and development of Statements of Common Ground (SoCGs).

The Archaeology and Heritage Engagement Forum

1.3.2.4 The AHEF process involves a roadmap where agreed key tasks involving project milestones, such as EIA Scoping, the PEIR and Environmental Statement were the focus of stakeholder engagement whilst progressing through the EIA process. Key tasks within the AHEF process included:

- Agreeing on the existing baseline information
- Agreeing on methods for impact assessment(s) (including where possible interpretation of impact and levels of significance)
- Agreeing on methods employed to determine significance of effect
- Provide feedback on key areas and progress in each topic area.

1.3.2.5 During the AHEF process the relevant information was passed to members before meetings at the key stages or when new information became available. The AHEF meetings then provided the opportunity for the stakeholders to discuss, provide feedback and advice as early as possible. A draft of the meeting minutes was shared with all members for comment prior to a final version being issued.

Roles and responsibilities of the AHEF

1.3.2.6 The AHEF was led by the Applicant. Table 1.17 provides a list of all participants involved in the AHEF.

Table 1.17: Participants in the AHEF.

Participants
The Applicant
Applicant’s HRA and EIA Consultant (RPS)
MMO
Historic England
Cadw
Royal Commission on the Ancient and Historical Monuments of Wales (RCAHMW)

The Applicant

1.3.2.7 RPS has been instructed by the Applicant to lead on the EIA process for Morgan Generation Assets. RPS are therefore working on the Applicant's behalf as chair and secretariat.

1.3.2.8 The Applicant has the following roles and responsibilities:

- Act as chair and secretariat
- Organise all AHEF meetings, including agreeing dates, times, attendees and agenda for meetings
- Disseminate any relevant information in good time ahead of each AHEF meeting
- Respond to queries on the Morgan Generation Assets
- Circulate meeting minutes after each AHEF meeting
- Collate, record and take account of any responses and comments provided, following meetings.

Marine Management Organisation (MMO)

1.3.2.9 The MMO's role in the AHEF is to provide comments on all offshore elements of the Morgan Generation Assets in English inshore and English offshore waters (within and outside of 12 nm from the English coast).

Historic England (HE)

1.3.2.10 HE's role's role in the AHEF is to provide comments on the offshore elements of the Morgan Generation Assets in English waters (within and outside of 12 nm from the English coast).

AHEF consultation

Overview

1.3.2.11 The remit and input required for the AHEF is as follows:

- Ensuring that the Applicant provides sufficient and proportionate information in the assessment of the Morgan Generation Assets
- Documenting agreement on information supplied by the Applicant to archaeology stakeholders
- Outlining how baseline data and the methods and analyses used for the EIA satisfies the relevant legislation and government policy for marine archaeology
- Identification of issues early in the EIA process and approach to the resolution of those issues
- Agree the results of the technical reports that support the EIA for the Morgan Generation Assets.

1.3.2.12 The outline programme of meetings is outlined in Table 1.18. Full meeting minutes and any additional information has been included within Appendix F.

MORGAN OFFSHORE WIND PROJECT: GENERATION ASSETS

Table 1.18: AHEF consultation held to date.

Date	Participants	Focus of consultation
AHEF 1 30 November 2022	The Applicant, MMO, CADW – Historic Environment, Historic England	<ul style="list-style-type: none"> • Presentation of the AHEF remit, ways of working and Road Map • Discussion of baseline approach to assessments.
AHEF 2 16 March 2023	The Applicant, MMO, CADW – Historic Environment, Historic England, RCAHMW	<ul style="list-style-type: none"> • Presentation of conclusions of the marine archaeology technical report • Discussion on historic seascape and how this would be addressed.
AHEF 3 13 July 2023	The Applicant, MMO, Historic England	<ul style="list-style-type: none"> • Discussion of key issues raised by key stakeholders in the statutory consultation responses • Project update following PEIR • Discussion on historic seascape • Inclusion of IoM dataset.
AHEF 4 13 October 2023	The Applicant, MMO, Historic England	<ul style="list-style-type: none"> • Presentation of updated assessment and technical reports to address statutory consultation responses • Acknowledgement of the MDS in relation to sandwave clearance • Discussion on the progress with the outline WSI

Issues agreed

1.3.2.13 The following issues are agreed:

- Key impacts addressed
- The methods employed for desktop data analysis
- The baseline characterisation formed from desktop data and site-specific survey
- The scope, approach and methodologies employed for geophysical survey and assessment of those data
- The methods for impact assessment(s).

Issues under discussion

1.3.2.14 There are no key issues still under discussion. It is understood that applicable method statements will be incorporated within the Written Scheme of Investigation (WSI) as it is developed further post consent.

Summary of progress

1.3.2.15 There were four meetings of the AHEF offshore during the pre-application process. The forum was engaged throughout the development of the Morgan Generation Assets environmental impact assessment. Forum meetings have been held to discuss key elements of the project at each stage of the assessment process, EIA Scoping, PEIR and the development of the marine archaeology and cultural heritage assessment for the Environmental Statement.

1.3.2.16 The Applicant has received acknowledgement of a number of key areas including baseline data and surveys to inform the assessment work, parameters for assessment

MORGAN OFFSHORE WIND PROJECT: GENERATION ASSETS

and the impact assessment methodology, and the maximum design parameters which informed the assessment.

1.4 Other technical consultation

1.4.1 Commercial fisheries consultation

Overview

1.4.1.1 The approach to commercial fisheries consultation was to identify commercial fishers that operate within the Irish Sea where there was the potential for their activities to be impacted by the Morgan Generation Assets. This assessment was done jointly with the Mona Offshore Wind Project due to the overlapping commercial fisheries and stakeholders in the region. Consultation focused on improving understanding of the different fishing methods and practices in the vicinity of the Morgan Generation Assets, discussing the potential impacts and possible measures to address these. A number of meetings have taken place between the Applicant and fisheries stakeholders, as detailed in Table 1.19. Full meeting minutes and any additional information has been included within Appendix G.

Table 1.19: Commercial fisheries consultation held to date.

Date	Participants	Focus of consultation
CF 1 24 June 2021	The Applicant, SFF, Scottish White Fish Producers Association (SWFPA), and West Coast Sea Products Ltd (WCSP), Fishing Industry Representative (FIR), MarineSpace	<ul style="list-style-type: none"> • Morgan Array Area location. • Co-existence during the operations and maintenance phase.
CF 2 29 June 2021	The Applicant, Individual fishers from B&M Fishing LLP Fleetwood and Maryport, Irish South and East Fish Producers Organisation (ISEFPO), Manx Fish Producers Organisation (MFPO), NFFO, Welsh Fishermen's Association (WFA), Western Fish Producers Organisation (WFPO), and Whitehaven Fishermen's Cooperative (WFC)	<ul style="list-style-type: none"> • Morgan Array Area location. • Co-existence during the operations and maintenance phase • Cumulative impacts with other activities and developments in the region • Potential impacts on fish stocks.
CF 3 01 July 2021	The Applicant, FIR, MarineSpace, NFFO	<ul style="list-style-type: none"> • Introduction to the project • Approach to fisheries stakeholder engagement • Overview of planned EIA and consenting process
CF 4 01 July 2021	The Applicant, ANIFPO, FIR, MarineSpace, NIFPO	<ul style="list-style-type: none"> • Morgan Array Area location. • Co-existence during the operations and maintenance phase

MORGAN OFFSHORE WIND PROJECT: GENERATION ASSETS

Date	Participants	Focus of consultation
CF 5 14 February 2022	The Applicant, ANIFPO, FIR, MarineSpace, Redercentrale (Belgian Fish Producers), WFPO,	<ul style="list-style-type: none"> • Project updates • Inter-array cable layout and burial depths • Cumulative impacts with other activities and developments in the region • Potential impacts on fish stocks • Vessel data to inform the environmental assessment.
CF 6 14 February 2022	The Applicant, FIR, MarineSpace, SFF, SWFPA, WCSP	<ul style="list-style-type: none"> • Introduction to project engagement with fisheries, surveys, fisheries liaison, scoping report, data collection, fisheries assessments and distinguish between queen and king scallop fisheries.
CF 7 15 February 2022	The Applicant, individual fishers (Whitehaven), FIR, MarineSpace, NFFO, WFC,	<ul style="list-style-type: none"> • Introduction to project engagement with fisheries, surveys, fisheries liaison, scoping report, data collection, fisheries assessments and distinguish between queen and king scallop fisheries.
CF 8 15 February 2022	The Applicant, IoM Government, FIR, MarineSpace, MFPO, NFFO, WFC,	<ul style="list-style-type: none"> • Introduction to project engagement with fisheries, surveys, fisheries liaison, scoping report, data collection, fisheries assessments and distinguish between queen and king scallop fisheries.
CF 9 22 November 2022	Applicant, MarineSpace, FIR	<ul style="list-style-type: none"> • A meeting was arranged at: ENERGUS, Blackwood Road, Workington. No fisheries stakeholders attended the event.
CF 10 23 November 2022	Applicant, MarineSpace, FIR, B&M Fishing LLP	<ul style="list-style-type: none"> • Project update • Morgan array indicative layout and co-existence during the operations and maintenance phase • Cumulative impacts with other activities and developments in the region • Potential impacts on fish stocks.
CF 11 24 November 2022	The Applicant, MarineSpace, FIR	<ul style="list-style-type: none"> • A meeting was arranged at: The Liner Hotel, Lord Nelson Street, Liverpool. No stakeholders attended the event.
CF 12 23 November 2022	The Applicant, MarineSpace, FIR, SWFPA, SFF, WCSP	<ul style="list-style-type: none"> • Project update • Morgan array indicative layout and co-existence during the operations and maintenance phase • Cumulative impacts with other activities and developments in the region • Potential impacts on fish stocks.

MORGAN OFFSHORE WIND PROJECT: GENERATION ASSETS

Date	Participants	Focus of consultation
CF 13 24 November 2022	Applicant, individual fishers (IoM), MarineSpace, FIR, IoM Government, MFPO	<ul style="list-style-type: none"> • Identify vessels affected by cable route surveys • Project update • Morgan array indicative layout and co-existence during the operations and maintenance phase • Cumulative impacts with other activities and developments in the region • Potential impacts on fish stocks.
CF 14 25 November 2022	Applicant, MarineSpace, FIR, Conwy commercial fishermen	<ul style="list-style-type: none"> • Project update • Morgan array indicative layout and co-existence during the operations and maintenance phase • Cumulative impacts with other activities and developments in the region • Potential impacts on fish stocks.
CF 15 01 December 2022	Applicant, MarineSpace, FIR, ANIFPO, NIFPO, WFA	<ul style="list-style-type: none"> • Project update • Morgan array indicative layout and co-existence during the operations and maintenance phase • Cumulative impacts with other activities and developments in the region • Potential impacts on fish stocks.
CF16 01 December 2022	Applicant, MarineSpace, FIR, Redercentrale (Belgian Fish Producers)	<ul style="list-style-type: none"> • Project update • Morgan array indicative layout and co-existence during the operations and maintenance phase • Cumulative impacts with other activities and developments in the region • Potential impacts on fish stocks.
CF 17 02 December 2022	The Applicant, MarineSpace, FIR, Irish Fish Producers Organisation (IFPO) and ISEFPO	<ul style="list-style-type: none"> • Identify vessels affected by cable route surveys • Project update • Morgan array indicative layout and co-existence during the operations and maintenance phase • Cumulative impacts with other activities and developments in the region • Potential impacts on fish stocks.

MORGAN OFFSHORE WIND PROJECT: GENERATION ASSETS

Date	Participants	Focus of consultation
<p>CF 18 11 September 2023</p>	<p>The Applicant, Belgium Producers Organisation (Rederscentrale), FIR, IoM Government, MFPO, MarineSpace,</p>	<ul style="list-style-type: none"> • Project update and presentation of changes made to the project since PEIR, including scallop mitigation zone • Presentation on key issues raised during PEIR consultation • Project commitments for long term Co-existence • Outline Fisheries liaison and coexistence plan. • Next steps for engagement post submission
<p>CF 19 19 September 2023</p>	<p>The Applicant, Brown and May (Morecambe Offshore Windfarm), FIR, MarineSpace, Morecambe Offshore Windfarm, RPS, WCSP</p>	<ul style="list-style-type: none"> • Project update and presentation of changes made to the project since PEIR, including scallop mitigation zone • Presentation on key issues raised during PEIR consultation • Project commitments for long term Co-existence • Outline Fisheries liaison and coexistence plan . • Next steps for engagement post submission
<p>CF20 19 September 2023</p>	<p>The Applicant, individual fisher (Annan) FIR, MarineSpace, Morecambe Offshore Windfarm, RPS, SWFPA</p>	<ul style="list-style-type: none"> • Project update and presentation of changes made to the project since PEIR, including scallop mitigation zone • Presentation on key issues raised during PEIR consultation • Project commitments for long term Co-existence • Outline Fisheries liaison and coexistence plan . • Next steps for engagement post submission
<p>CF 21 20 September 2023</p>	<p>The Applicant, FIR, individual fishers (Blackpool) MarineSpace, MMO, Morecambe Offshore Windfarm, NFFO, RPS, Seafish</p>	<ul style="list-style-type: none"> • Project update and presentation of changes made to the project since PEIR, including scallop mitigation zone • Presentation on key issues raised during PEIR consultation • Morgan array indicative layout and co-existence during the operations and maintenance phase • Cumulative effects assessment

MORGAN OFFSHORE WIND PROJECT: GENERATION ASSETS

Date	Participants	Focus of consultation
<p>CF 22 20 September 2023</p>	<p>The Applicant, FIR, individual fishers (Whitehaven), MarineSpace, MMO, Morecambe Offshore Windfarm, NFFO, RPS, Whitehaven Fishermen's Cooperative,</p>	<ul style="list-style-type: none"> • Project update and presentation of changes made to the project since PEIR, including scallop mitigation zone • Presentation on key issues raised during PEIR consultation • Morgan array indicative layout and co-existence during the operations and maintenance phase • Cumulative effects assessment
<p>CF 23 21 September 2023</p>	<p>The Applicant, Brown and May (Transmission Assets), individual fishers (Conwy) MarineSpace, RPS, Morecambe Offshore Windfarm (Transmission Assets)</p>	<ul style="list-style-type: none"> • Project update and presentation of changes made to the project since PEIR, including scallop mitigation zone • Provided an overview of the key feedback that had been received on the Preliminary Environmental Information Report (PEIR) • Morgan array indicative layout and co-existence during the operations and maintenance phase • Cumulative effects assessment
<p>CF 24 03 October 2023</p>	<p>The Applicant, FIR, ISEFPO, MarineSpace, RPS</p>	<ul style="list-style-type: none"> • Provided an overview of the project progress to date, the current status of project and expected application dates • key feedback on coexistence through the PEIR • Cumulative effects assessment • Project changes and commitments – Morgan Gen • Project changes and commitments – Mona • Extent of area important for scallop stocks
<p>CF 25 04 October 2023</p>	<p>The Applicant, ANIFPO, FIR, individual fishers (Kilkeel), MarineSpace</p>	<ul style="list-style-type: none"> • Provided an overview of the project progress to date, the current status of project and expected application dates • key feedback on coexistence through the PEIR • Cumulative effects assessment • Project changes and commitments – Morgan Gen • Project changes and commitments – Mona

MORGAN OFFSHORE WIND PROJECT: GENERATION ASSETS

Date	Participants	Focus of consultation
CF 26 04 October 2023	The Applicant, FIR, NIFPO, MarineSpace	<ul style="list-style-type: none"> • Provided an overview of the project progress to date, the current status of project and expected application dates • key feedback on coexistence through the PEIR • Cumulative effects assessment • Project changes and commitments – Morgan Gen • Project changes and commitments – Mona

Issues agreed

1.4.1.2 The following issues have been agreed with commercial fisheries stakeholders:

- Baseline data used within the assessment and data limitations
- Changes to the Project Design Envelope including, reduction in extent of Morgan Array Area, reduction in the maximum number of turbines from 107 to 96, removal of monopile foundations as an option and reduction in the maximum length of array cables reducing cable protection allowance
- Co-existence options including, positions of turbines, orientation of inter-array cabling, minimum spacing between turbines, and a scallop mitigation zone within the Morgan Array Area. A final Fisheries Liaison and Coexistence Plan (FLCP) will be developed through consultation with commercial fisheries stakeholders. An outline of this plan has been submitted as part of the Application (Document Reference J10).

Issues under discussion

1.4.1.3 The following issues are under discussion with commercial fisheries stakeholders:

- Co-existence approach which will be agreed through the development and implementation of the FLCP including displacement of fishing activity during construction
- Cable installation methods and cable protection and coexistence of fisheries activity during the operations and maintenance phase of the project

Summary of progress

1.4.1.4 The project has made a number of commitments to address coexistence of commercial fishing activity within the Morgan Array Area, as a direct result of engagement with fisheries stakeholders. These commitments have been presented to fishing stakeholders and relevant measures will be secured through the FLCP, for which an outline plan has been submitted as part of the application. The outline FLCP will be shared with commercial fishing stakeholders for comment and the final plan will be developed with ongoing engagement between the Applicant and commercial fisheries stakeholders.

MORGAN OFFSHORE WIND PROJECT: GENERATION ASSETS

1.4.2 Shipping and navigation consultation

Overview

1.4.2.1 In addition to the MNEF, additional stakeholder engagement activities have been carried out to facilitate discussions and agreement between the Applicant, jointly with the Applicant of the Mona Offshore Wind Project and the key stakeholders in relation to the information that has been prepared to support the shipping and navigation assessment of the Environmental Statement. Consultation for different aspects of the shipping and navigation EIA has been undertaken with individual stakeholders or small groups where appropriate rather than through the MNEF.

1.4.2.2 A number of meetings have taken place between the Applicant and stakeholders, as detailed in Table 1.20. Full meeting minutes and any additional information has been included within Appendix H.

Table 1.20: Shipping and navigation consultation held to date.

Date	Participants	Focus of consultation
14 October 2021	The Applicant, MCA, RPS	<ul style="list-style-type: none"> Introduction to the Morgan Generation Assets Morgan Generation Assets design Shipping and navigation data to be used for the EIA.
01 February 2022	The Applicant, MCA, Trinity House	<ul style="list-style-type: none"> Project update Confirmation of interpretation and application of relevant policies (National Planning Statement (NPS) for Renewable Energy Infrastructure (NPS EN-3)) and guidance Summarised key impacts and early assessment findings Proposed approach to assessment and resolution of impacts.
09 February 2022	The Applicant, Department for Business, Energy and Industrial Strategy (BEIS)	<ul style="list-style-type: none"> Introduction to the project Key potential shipping and navigation impacts and the application's approach to these.
14 February 2022	The Applicant, MCA, UK Chamber of Shipping, Seatruck Ferries, Stena Line, IoMSPC	<ul style="list-style-type: none"> Project update Key shipping and navigation impacts Review of proposed approach to assessment.
04 April 2022	The Applicant, IoMSPC,	<ul style="list-style-type: none"> To provide the evidential basis behind the current operations and constraints of ferry operations in order to inform the NRA and EIA.
05 April 2022	The Applicant, Seatruck	<ul style="list-style-type: none"> To provide the evidential basis behind the current operations and constraints of ferry operations in order to inform the NRA and EIA.
14 April 2022	The Applicant, Stena line	<ul style="list-style-type: none"> To provide the evidential basis behind the current operations and constraints of ferry operations in order to inform the NRA and EIA.
21 April 2022	The Applicant, RYA	<ul style="list-style-type: none"> Introduction to the project, membership of the MNEF, hazard workshop attendance and information on summer vessel traffic surveys.
01 June 2022	The Applicant, IoMSPC	<ul style="list-style-type: none"> Letter to provide an update on the project.
01 June 2022	The Applicant, P&O	<ul style="list-style-type: none"> Letter to provide an update on the project.
01 June 2022	The Applicant, Seatruck	<ul style="list-style-type: none"> Letter to provide an update on the project.
01 June 2022	The Applicant, Stena Line	<ul style="list-style-type: none"> Letter to provide an update on the project.

MORGAN OFFSHORE WIND PROJECT: GENERATION ASSETS

Date	Participants	Focus of consultation
30 June 2022	The Applicant, Seatruck, HR Wallingford	<ul style="list-style-type: none"> • Bridge navigation simulation preparations • Meeting for familiarisation of navigation simulation procedure for Seatruck by HR Wallingford.
20 to 21 July 2022	The Applicant, IoMSPC, HR Wallingford	<ul style="list-style-type: none"> • Bridge navigation simulation preparations • Meeting for familiarisation of navigation simulation procedure for IoMSPC by HR Wallingford.
11 to 12 August 2022	The Applicant, Stena Line, HR Wallingford	<ul style="list-style-type: none"> • Bridge navigation simulation preparations • Meeting for familiarisation of navigation simulation procedure for IoMSPC by HR Wallingford.
17 to 19 August 2022	The Applicant, IoMSPC, HR Wallingford	<ul style="list-style-type: none"> • PEIR stage bridge navigation simulations.
23 to 25 August 2022	The Applicant, Stena Line, HR Wallingford	<ul style="list-style-type: none"> • PEIR stage bridge navigation simulations.
8 to 9 September 2022	The Applicant, Seatruck, HR Wallingford	<ul style="list-style-type: none"> • PEIR stage bridge navigation simulations.
3 October 2022	The Applicant, S&N Stakeholders for Hazard workshop	<ul style="list-style-type: none"> • Online webinar to run through the approach and process for the Hazard workshop with all S&N stakeholder attendees.
10 to 11 October 2022	The Applicant, S&N Stakeholders for Hazard workshop	<ul style="list-style-type: none"> • Morgan Generation Assets Hazard Workshop.
19 October 2022	The Applicant, Isle of Man Government	<ul style="list-style-type: none"> • Consultation meeting.
20 October 2022	The Applicant, Orsted	<ul style="list-style-type: none"> • Consultation meeting.
23 to 25 May 2023	The Applicant, Stena Line	<ul style="list-style-type: none"> • Environmental Statement stage bridge navigation simulations.
22 to 23 June 2023	The Applicant, Seatruck, HR Wallingford	<ul style="list-style-type: none"> • Environmental Statement stage bridge navigation simulations
24 May 2023	MCA	<ul style="list-style-type: none"> • Email on the Applicant's intention to undertake further vessel traffic surveys to address consultation responses • Summary of existing vessel traffic data help by the Applicant.
05 July 2023	MCA	<ul style="list-style-type: none"> • Email to MCA regarding vessel traffic surveys.
13 to 14 September 2023	The Applicant, IoMSPC, HR Wallingford	<ul style="list-style-type: none"> • Environmental Statement stage bridge navigation simulations
18 September 2023	The Applicant, MNEF	<ul style="list-style-type: none"> • Email to update MNEF about the post PEIR project boundary changes.
7 December 2023	Applicant, Mona Offshore Wind Ltd and Morecambe Offshore Windfarm, Seatruck Ferries	<ul style="list-style-type: none"> • To provide an update following the Hazard workshops
11 December 2023	Applicant, Mona Offshore Wind Ltd and Morecambe Offshore Windfarm, IoMSPC	<ul style="list-style-type: none"> • To provide an update following the Hazard workshops

MORGAN OFFSHORE WIND PROJECT: GENERATION ASSETS

Date	Participants	Focus of consultation
13 December 2023	Applicant, Mona Offshore Wind Ltd, Morecambe Offshore Windfarm, Stena Line, NASH Maritime	<ul style="list-style-type: none"> To provide an update following the Hazard workshops
18 December 2023	Applicant, Mona Offshore Wind Ltd, Trinity House, NASH Maritime, RPS	<ul style="list-style-type: none"> To provide an update following the Hazard workshops
19 December 2023	Applicant, Mona Offshore Wind Ltd, MCA, NASH Maritime, RPS	<ul style="list-style-type: none"> To provide an update following the Hazard workshops

Issues under discussion

- 1.4.2.3 The following issues are under discussion with shipping and navigation stakeholders:
- Potential effects of the Morgan Generation Assets on commercial vessel routing
 - Potential cumulative effects with the Morgan Generation Assets on commercial vessel routing

Summary of progress

- 1.4.2.4 Navigation simulations were undertaken at the PEIR stage with each commercial operator potentially impacted by the Morgan Generation Assets, Stena, SeaTruck and IoMSPC. This work looked at potential routing of vessels under various weather/sea state scenarios with the presence of the Morgan Array Area and cumulatively with other Irish Sea Round 4 offshore wind projects (Mona Offshore Wind Project and Morecambe Offshore Windfarm) as well as existing offshore wind farms in the Irish sea.
- 1.4.2.5 The results from the navigation simulations fed into a hazard scoring workshop which was held with shipping and navigation stakeholders in October 2022 to review the navigational hazards of the Morgan Generation Assets. It was attended by representatives from ferry operators, regulators, commercial bodies, oil and gas, ports, fishing community and recreational users. The hazard workshop looked at the safety of navigation under certain route scenarios with the presence of the Morgan Array Area and cumulatively with other proposed Round 4 offshore wind farms and existing offshore wind farms in the Irish sea.
- 1.4.2.6 The results from the hazard workshop fed into the NRA and CRNRA which were prepared for the PEIR and formed the technical basis of the shipping and navigation PEIR assessment chapter. At PEIR stage a number of unacceptable risks were identified both alone and cumulatively (see Volume 2, Chapter 12: Shipping and navigation of the PEIR).
- 1.4.2.7 Following PEIR consultation the Applicant made a number of commitments to address the potential impacts identified on shipping and navigation receptors. These included:
- Morgan Array Area boundary changes to reduce cumulative impacts with the Mona Offshore Wind Project
 - Array layout commitments including minimum wind turbine spacing and two lines of orientation

MORGAN OFFSHORE WIND PROJECT: GENERATION ASSETS

- Commitment to further engagement including a repeat of full bridge navigation simulations to test the changes being made by the Applicant.

1.4.2.8 For the preparation of the Environmental Statement further bridge simulations were held with commercial operators between June and September 2023. These simulations tested boundary amendments to the Morgan Array Area and potential impacts on vessel routing alone and cumulatively with the Mona Offshore Wind Project, Morecambe Offshore Windfarm Generation Assets and Morgan and Morecambe Offshore Wind Farms Transmission Assets. The re-run bridge simulations were held with the ferry operators Stena Line, SeaTruck and IoMSPC. The Agreement for Lease boundary for Moir Vannin offshore wind project in Isle of Man waters was shared by Ørsted on 01 September 2023, after simulations were conducted with Stena Line and SeaTruck, but some of the runs undertaken with the IoMSPC included the Moir Vannin Agreement for Lease boundary.

1.4.2.9 The results from these navigation simulations fed into a repeat hazard scoring workshop which was held with shipping and navigation stakeholders in September 2023 to review the navigational hazards of the Morgan Generation Assets following revisions to the Morgan Array Area. It was attended by representatives from ferry operators, regulators, commercial bodies, oil and gas, ports, fishing community and recreational users.

1.4.2.10 Following the repeated navigation simulations and hazard workshop there is some outstanding discussion on the potential cumulative effects on commercial operators.

1.4.3 Aviation and radar consultation

Overview

1.4.3.1 The approach to aviation consultation was to identify impacts on specific receptors (airports, aerodromes and radar systems) and work with key stakeholders to identify appropriate mitigation. Several meetings have taken place between the Applicant, jointly with the Applicant of the Mona Offshore Wind Project and various stakeholders, as detailed in Table 1.21. Full meeting minutes and any additional information has been included in Appendix I.

Table 1.21: Aviation and radar consultation held to date.

Date	Participants	Focus of consultation
01 January 2022	The Applicant, NATS	<ul style="list-style-type: none"> • Discussion of potential impact to stakeholder.
04 May 2022	The Applicant, Noordzee Helikopters Vlaanderen (NHV)	<ul style="list-style-type: none"> • Discussion of potential impacts to stakeholders.
12 July 2022	The Applicant, Liverpool Airport	<ul style="list-style-type: none"> • Flight trial requirements • Discussion on radar mitigation scheme.
20 January 2023	The Applicant, Isle of Man Ronaldsway Airport	<ul style="list-style-type: none"> • Discussion of stakeholder engagement for PEIR, post-PEIR and SoCG.
28 March 2023	The Applicant, Barrow Walney Airfield and Warton Airfield	<ul style="list-style-type: none"> • Discussion of potential impacts to stakeholders.
31 March 2023	The Applicant, Liverpool Airport	<ul style="list-style-type: none"> • Discussion of mitigation possibilities.

MORGAN OFFSHORE WIND PROJECT: GENERATION ASSETS

Date	Participants	Focus of consultation
01 August 2023	The Applicant, Isle of Man Ronaldsway Airport	<ul style="list-style-type: none"> Discussion of potential impact and cumulative impacts to stakeholder.
07 August 2023	The Applicant, Anatec, Harbour Energy, RPS	<ul style="list-style-type: none"> Project update and discussion of Harbour Energy section 42 response
10 August 2023	The Applicant, NATS	<ul style="list-style-type: none"> Discussion of potential impacts to stakeholder and appropriate regional mitigation.
25 August 2023	The Applicant, Blackpool Airport	<ul style="list-style-type: none"> Discussion of potential impact to stakeholder and future engagement for route to mitigation.
05 September 2023	The Applicant, The Isle of Man Airport	<ul style="list-style-type: none"> Discussion of potential impact to stakeholder and appropriate mitigation for the Primary Surveillance Radar (PSR) at the Isle of Man Airport.
26 September 2023	The Applicant, Barrow and Walney Aerodromes	<ul style="list-style-type: none"> Discussion of potential impacts to stakeholder and mitigation approach (increase in Minimum Safety Altitude (MSA) in the southwest sector from 1,900 ft to 2,200 ft).
04 October 2023	The Applicant, Anatec, Harbour Energy, RPS	<ul style="list-style-type: none"> Follow up meeting to that held on 07 August 2023
03 November 2023	The Applicant, NATS, Osprey, RPS	<ul style="list-style-type: none"> Discussion of the approach to mitigation
08 November 2023	The Applicant, Osprey, LJLA, RPS	<ul style="list-style-type: none"> Discussion of LJLA's responses to PEIR consultation
04 December 2023	The Applicant, Harbour Energy, Anatec, RPS	<ul style="list-style-type: none"> Follow up meeting to that held on 04 October 2023
08 December 2023	The Applicant, Liverpool Airport, Osprey, RPS	<ul style="list-style-type: none"> Discussion of the approach to mitigation
19 December 2023	The Applicant, Blackpool Airport	<ul style="list-style-type: none"> Discussion of potential impact to stakeholder.
15 January 2024	The Applicant, NATS, Osprey, RPS	<ul style="list-style-type: none"> Discussion of the approach to mitigation
13 February 2024	The Applicant, NATS, Osprey, RPS	<ul style="list-style-type: none"> Discussion of the approach to mitigation

Issues under discussion

1.4.3.2 The following items are under discussion with aviation and radar stakeholders.

- Detailed routes to PSR mitigation

MORGAN OFFSHORE WIND PROJECT: GENERATION ASSETS

- Detailed routes to mitigation on flight safety procedures

Summary of progress

1.4.3.3 While the baseline characterisation has been satisfactorily agreed on by the Applicant and key stakeholders, along with approaches to mitigation for potential impacts upon these stakeholders, the exact mitigation agreements required still have to be drafted and settled where required and work on these is ongoing.

1.4.4 Other sea users consultation

Overview

1.4.4.1 The approach to Other sea users consultation was to identify receptors within the east Irish Sea. A questionnaire was sent during the preparation of the PEIR to the major oil and gas operators operating in the area:

- Eni UK Ltd.
- Harbour Energy Plc
- Spirit Energy Ltd.

1.4.4.2 Information provided through consultation with key stakeholders informed the baseline of Volume 2, Chapter 9: Other sea users of the Environmental Statement (Document Reference F2.9), and therefore the impact assessment presented in the same chapter.

Table 1.22: Other sea users consultation held to date.

Date	Participants	Focus of consultation
20 April 2022	Spirit Energy Ltd.	Information on assets in the east Irish Sea and future activity.
24 November 2022	Spirit Energy	Information on assets in the east Irish Sea and future activity.
24 November 2022	Harbour Energy Plc	Information on assets in the east Irish Sea and future activity.
25 November 2022	Rhyl Charter Anglers	To discuss impacts of the Morgan Generation Assets and the Mona Offshore Wind Project on charter angling
08 December 2022	Eni UK Ltd.	Information on assets in the east Irish Sea and future activity.
16 June 2023	BT	Discussion of the potential interactions between the Morgan Generation Assets and the MT1 cable, such as proximity.
19 June 2023	Manx Utilities	To discuss the relationship between the Morgan Generation Assets and the UK-IoM interconnector
19 June 2023	Harbour Energy meeting	To discuss the relationship between the Morgan Generation Assets and the Millom assets.
07 August 2023	Harbour Energy meeting	Project update and discussion of Harbour Energy section 42 response.
04 October 2023	Harbour Energy meeting	Follow up meeting to that held on 07 August 2023.

MORGAN OFFSHORE WIND PROJECT: GENERATION ASSETS

Date	Participants	Focus of consultation
25 October 2023	Ørsted Burbo Limited, Burbo Extension Limited, Walney Offshore Windfarms Limited, Barrow Offshore Windfarm Limited and Walney Extension Limited meeting	Project update and discussion of section 42 responses.
08 November 2023	West of Duddon Sands Morecambe Wind Limited meeting	Project update and discussion of section 42 responses.
01 December 2023	Eni UK Ltd.	Confirmation of no further engagement with Morgan Generation Assets required.
04 December 2023	Harbour Energy meeting	Follow up meeting to that held on 04 October 2023.
06 December 2023	Manx Utilities	To discuss the relationship between the Morgan Generation Assets and the UK-loM interconnector
08 March 2024	Manx Utilities	To discuss the relationship between the Morgan Generation Assets and the UK-loM interconnector

Issues under discussion

1.4.4.3 Engagement is ongoing with Manx Utilities regarding requirements for future proximity agreements.

1.4.5 Seascape, landscape and visual resources consultation

Overview

1.4.5.1 The approach to SLVR consultation was to identify statutory advisors and relevant local authorities where there was the potential for visual impacts from the Morgan Generation Assets. An overview of the key issues raised during consultation activities undertaken to date specific to seascape, landscape and visual resources is presented in Table 1.23. Consultees Feedback on the candidate representative viewpoints was requested from the following stakeholders:

- Natural England
- Natural Resources Wales?
- Anglesey County Council?
- Conwy County Borough Council?
- Denbighshire County Council?
- Gwynedd Council?
- West Lancashire Borough Council
- Preston City Council
- Chorley Council
- Lancashire County Council

MORGAN OFFSHORE WIND PROJECT: GENERATION ASSETS

- Sefton Council
- Fylde Borough Council
- Blackpool City Council
- Lake District National Park Authority
- Isle of Man Government.

1.4.5.2 Further detail is presented in Volume 4, Annex 10.2: Seascape and landscape character baseline technical report of the Environmental Statement (Document Reference F4.10.2) and Volume 4, Annex 10.3: Visual baseline technical report of the Environmental Statement (Document Reference F4.10.3).

Table 1.23: Seascape, landscape and visual consultation held to date.

Date	Participants	Focus of consultation
September 2022	The Applicant, Denbighshire County Council, Isle of Anglesey County Council, Isle of Man Government, Welsh Government, Conwy County Borough Council, Gwyneth Council, NRW, Eryri National Park Authority.	<ul style="list-style-type: none"> • Seascape and visual resources workshop • Extent of the buffer to assess seascape impacts • Principal guidance/methodology to be used for assessment • Characterisation of the baseline environment • Identification of the representative viewpoint locations.
09 November 2022	Natural England	<ul style="list-style-type: none"> • Email from Natural England regarding the recommended size of the visual buffer
24 November 2022	The Applicant, Isle of Man Government, West Lancashire Council, Preston City Council, Sefton Council	<ul style="list-style-type: none"> • Seascape and visual resources workshop to present and agree the MDS for the Morgan SLVR assessment.
		<ul style="list-style-type: none"> •

Issues discussed

1.4.5.3 The following issues have been discussed with key stakeholders and taken into the assessments for seascape and landscape:

- The extent of the seascape, landscape and visual resources study area
- Assessment methodology and the MDS for the SLVR assessment
- Representative viewpoints for inclusion
- Impacts of Morgan Generation Assets wind turbines on public and private views
- Impacts of Morgan Generation Assets wind turbines on Special Qualities of nationally designated landscapes
- Cumulative impacts.

MORGAN OFFSHORE WIND PROJECT: GENERATION ASSETS

Issues under discussion

1.4.5.4 All issues discussed have been addressed in the Seascape, landscape and visual resources assessment (Document Reference F2.10).

Summary of progress

1.4.5.5 Matters arising from consultation have been discussed and agreed with relevant stakeholders where applicable.

1.4.6 Socio-economics consultation

Overview

1.4.6.1 A summary of the key consultation undertaken jointly with the Applicant of the Mona Offshore Wind Project and with stakeholders relevant to socio-economics is presented in Table 1.24. Further information is provided in Volume 2, Chapter 13: Socio-economics of the Environmental Statement (Document Reference F2.13).

Table 1.24: Socio-economics consultation held to date.

Date	Participants	Focus of consultation
23 January 2023	Applicant, RPS, HJA, Barrow Port, Cumbria Local Enterprise Partnership (LEP), Liverpool City Region Combined Authority, Welsh Government (LCRCA), ORE Catapult, Renewable UK Cymru, Welsh Government (Relevant Representative), Cumbria County Council	<ul style="list-style-type: none"> • Economy stakeholder consultation workshop • To consider including Birkenhead Port and Mostyn Port within the same impact area • To consider capacity of ports and suitability of existing infrastructure in handling large scale construction • Investment into infrastructure at port locations required to provide support during construction phase • Consider sharing work amongst ports across the Offshore Energy Alliance cluster to sustain capability • Consider building apprenticeship programmes and using skills and training facilities already in place • Consider how to make skills sustainable beyond construction of single offshore wind farm and understand time scales for demand.
25 January 2023	Applicant, RPS, HJA, Visit Wales	<ul style="list-style-type: none"> • Tourism stakeholder consultation workshop • Discussion on consenting strategy and project scope • Discussion on assessment approach and study areas for tourism
05 December 2023	Applicant, RPS, IoM Government, IoMSPC, HJA	<ul style="list-style-type: none"> • Project update • Discussion on the Socio-economic impact assessment work for the EIA

Issues agreed

1.4.6.2 The following issues have been agreed:

- The extent of the economics and social study areas are considered appropriate
- Baseline data used within the assessment and data limitations.

Issues under discussion

1.4.6.3 No issues are currently under discussion.

1.5 References

Defra (2012) Habitats Regulations, Evidence plans for Nationally Significant Infrastructure Projects. September 2012.

Department for Energy Security and Net Zero (DESNZ) (2023) Digest of UK Energy Statistics (DUKES): renewable sources of energy chapter 6.2: Capacity of generation from renewable sources and share of total generation. Available: <https://www.gov.uk/government/statistics/renewable-sources-of-energy-chapter-6-digest-of-united-kingdom-energy-statistics-dukes>. Accessed February 2024.

Morgan Offshore Wind Ltd (2023) Morgan Offshore Wind Project Preliminary Environmental Information Report. Volume 2, Chapter 7: Shipping and navigation. Available: https://bp-mmt.s3.eu-west-2.amazonaws.com/morgan/04+Preliminary+Environmental+Information+Report/02+-+Offshore+Chapters/RPS_EOR0801_PEIR_Morgan_Vol2_12_SN.pdf (Accessed February 2024).

Natural England (2022), Offshore Wind Marine Environmental Assessments: Best Practice Advice for Evidence and Data Standards. Phase II: Expectations for pre-application engagement and best practice guidance for the Evidence Plan Process.

The Planning Inspectorate (2017), Advice Note 11 Annex H Evidence Plan for Habitats Regulations Assessments of Nationally Significant Infrastructure Projects.